

Contra Costa County 2018



Interdepartment



Communications



Guide

TABLE of CONTENTS

Board of Supervisors	3
Cities	4-10
Fire Districts	11
Garbage	12
Law Enforcement (Non-Emergency)	13
Libraries	14
Parks and Centers Maintained by	15
Sandbags	16-20
Sanitary Districts	21-23
School Districts	24-26
Utilities	27
Water Districts	28
A thru Z	29-144

Any comments or questions please contact the following:

Public Works - 255 Glacier Drive, Martinez

Cicelia McGee 313-2280 or cicelia.mcgee@pw.cccounty.us

Linda Zimmerman 313-2204 or linda.zimmerman@pw.cccounty.us

Department of Conservation and Development - 30 Muir Road, Martinez

Building Inspection

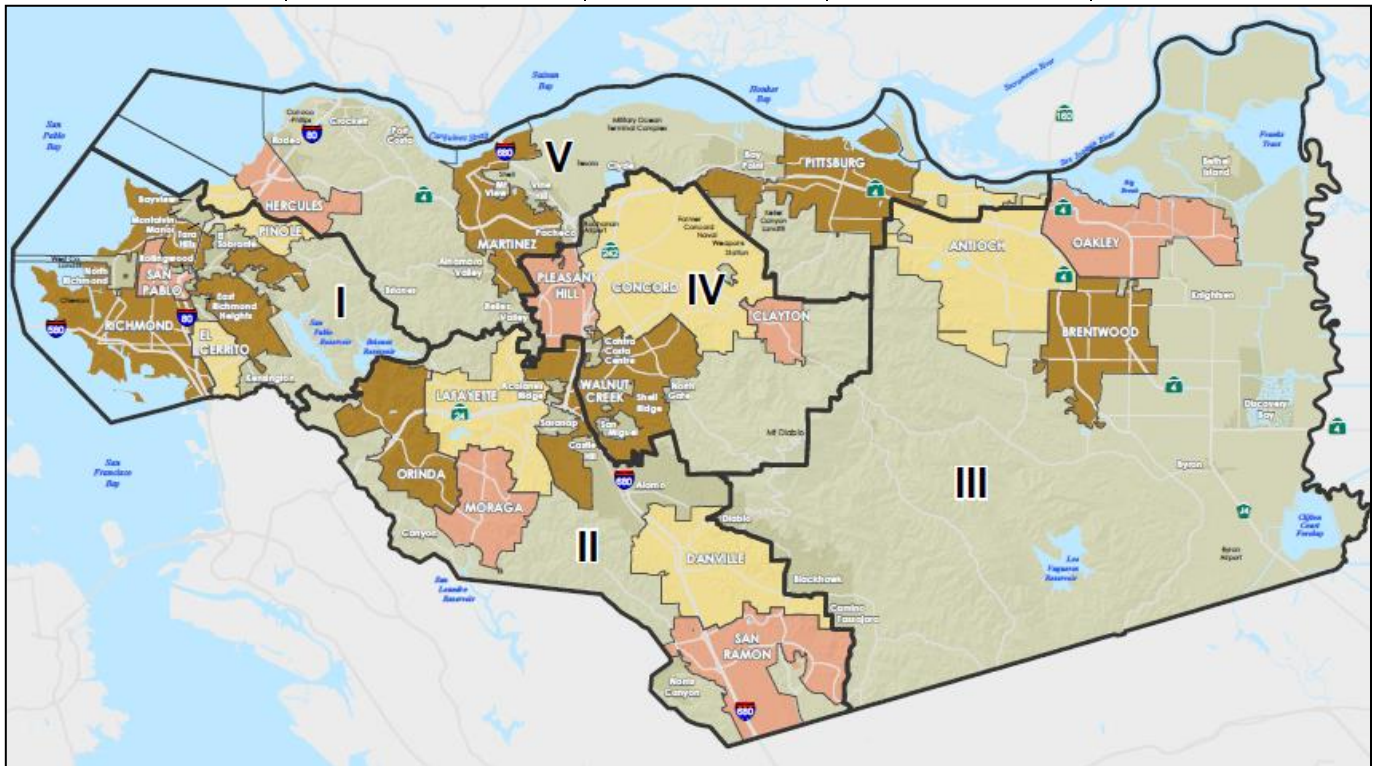
Trish Dominguez 674-7723 or trish.dominguez@dcd.cccounty.us

Community Development

Joyce Ring-Reaves 674-7866 or joyce.ring-reaves@dcd.cccounty.us

BOARD OF SUPERVISORS DISTRICT BREAKDOWN AND MAP

JOHN GIOIA DISTRICT 1 11780 San Pablo Ave., Ste. D El Cerrito, CA 94530 (510) 231-8686 (510) 374-3429 fax	CANDACE ANDERSEN DISTRICT 2 San Ramon Valley Office 309 Diablo Road Danville, CA 94526 (925) 957-8860 (925) 820-3785 fax Lamorinda Office Fire District Headquarters 3338 Mt. Diablo Blvd. Lafayette, CA 94549 (925) 646-6067	DIANE BURGIS DISTRICT 3 Brentwood Office 3361 Walnut Boulevard Suite 140 Brentwood, CA 94513 (925) 252-4500 (925) 240-7261 fax	KAREN MITCHOFF DISTRICT 4 2151 Salvio Street, Suite R Concord, CA 94520 (925) 521-7100 (925) 646-5202 fax	FEDERAL GLOVER DISTRICT 5 Pittsburg Office 190 East 4 th Street Pittsburg, CA 94565 (925) 608-4200 (925) 608-4209 fax Martinez Office 651 Pine Street, 4 th Floor Martinez, CA 94553 (925) 6084200 (925) 608-4209 fax Hercules Office 151 Linus Pauling Drive Hercules, CA 94547 (510) 608-4200 (510) 608-4209 fax
Bay View	Acalanes Ridge	Antioch (part)	Buchanan Airport	Alhambra Valley
East Richmond Heights	Alamo	Bethel Island	Clayton	Antioch (part)
El Cerrito	Canyon	Blackhawk	Concord	Bay Point
El Sobrante	Castle Hill	Brentwood	Contra Costa Centre	Briones
Kensington	Danville	Byron	North Gate	Clyde
Montalvin Manor	Dougherty Valley	Camino Tassajara	Pleasant Hill	Crockett
North Richmond	Lafayette	Clayton (Unincorp)	Pleasant Hill BART	Hercules
Pinole (part)	Moraga	Diablo	San Miguel	Martinez
Richmond	Norris Canyon	Discovery Bay	Shell Ridge	Mt. View
Rollingwood	Orinda	Knightsen	Walnut Creek (part)	Pacheco
San Pablo	San Ramon	Oakley		Pinole (part)
Tara Hills	Saranap			Pittsburg
	Walnut Creek (part)			Port Costa
				Reliez Valley
				Rodeo
				Tormey
				Vine Hill



District Map approved July 26, 2011

CITIES
Contra Costa County

Antioch.....	(925) 779-7000
Brentwood	(925) 516-5400
Clayton	(925) 672-3622
Concord.....	(925) 671-3000
Danville, Town of	(925) 314-3300
Discovery Bay.....	(925) 634-1131
El Cerrito.....	(510) 215-4300
Hercules	(510) 799-8200
Lafayette	(925) 284-1968
Martinez.....	(925) 372-3500
Moraga, Town of.....	(925) 376-2590
Oakley.....	(925) 625-7000
Orinda.....	(925) 253-4200
Pinole	(510) 724-9000
Pittsburg.....	(925) 252-6900
Pleasant Hill.....	(925) 671-5270
Richmond	(510) 620-6500
San Pablo	(510) 215-3000
San Ramon.....	(925) 973-2500
Walnut Creek.....	(925) 943-5800

CITIES
Alameda County

Alameda	(510) 747-7900
Albany	(510) 524-9543
Berkeley.....	(510) 981-6300
Dublin	(925) 833-6630
Emeryville.....	(510) 596-4330
Fremont	(510) 494-4700
Hayward.....	(510) 583-4700
Livermore	(925) 960-8000
Newark.....	(510) 578-4589
Oakland	(510) 238-3171
Piedmont	(510) 420-3050
Pleasanton	(925) 931-5300
San Leandro	(510) 577-3440
Union City.....	(510) 675-5305

CITY OFFICES

CITY OF ANTIOCH

Third and H Street, P.O. Box 5007, 94531-5007 (925) 779-7000

Chief Building Official	Vacant	779-7065
City Engineer	Ron Bernal	779-6950
City Manager	Ron Bernal	779-7011
Secretary to City Manager	Debbie Smith	779-7011
	FAX	779-7003
Community Development Dir.	Forrest Ebbs	779-7035
Economic Dev. Director	Lizeht Zepeda	779-6168
Public Works Director	Ron Bernal	779-6950

CITY OF BRENTWOOD

150 City Park Way, 94513 (925) 516-5400

Chief Building Inspector	Greg Adams (Interim)	516-5405
PW Director/City Engineer	Balwinder Grewal	516-5420
City Manager	Gustavo "Gus" Vina	516-5440
Secretary to City Manager	Diane Williams	516-5440
	FAX	516-5441
Planning/ Community Development Dir.	Casey McCann	516-5195
Public Works Director	Balwinder Grewal	516-6000

CITY OF CLAYTON

6000 Heritage Trail, 94517 (925) 672-3622

City Engineer	Scott Alman	969-8181
Community Devlp./Planning	Mindy Gentry	673-7340
Police Department	Elise Warren	673-7350
	FAX	672-4917
City Manager	Gary Napper	673-7300

CITY OF CONCORD

(FOR MAILING PURPOSES, USE THE MS CODES)

1950 Parkside Drive, 94519 (925) 671-3000

City Manager (MS01)	Valerie Barone	671-3150
City Clerk (MS01)	Joelle Fockler	671-3390
Community & Economic Develop. Dir. (MS01)	Andrea Ouse	671-3434
Economic Development Director (MS10B)	John Montagh	671-3082
Public Works Director/ City Engineer	Justin Ezell	671-3231
	Kevin Marstall	671-3257
Chief Building Official	Ryan Pursley	671-3173

TOWN OF DANVILLE510 La Gonda Way, 94526 (925) 314-3300

Chief Building Official	Mike Leontiades	314-3373
City Eng./		
Development Svc. Dir.	Steve Lake	314-3319
Town Manager	Joe Calabrigo	314-3388
Assistant to Town Manager	Nat Rojanasathira	314-3328
	FAX (Town Mgr & Asst)	838-0548
	FAX (Planning Eng/Dev)	838-0360

CITY OF DISCOVERY BAY

FAX (925) 513-2705

1800 Willow Lake Road, 94505 (925) 634-1131

General Manager	Michael Davies
Landscape & Facilities Mgr.	Brian Miller
Water & Waste Water Mgr.	Virgil Koehne

CITY OF EL CERRITO10890 San Pablo Avenue, 94530 (510) 215-4300

Building Official	Mark Soltes	215-4365
City Engineer/PW Director	Yvetteh Ortiz	215-4382
City Manager	Scott Hanin	215-4301
City Manager Assist	Karen Pinkos	215-4302
City Clerk/Sec to CityMgr	Cheryl Morse	215-4305
	FAX	215-4379
Senior Planner	Sean Moss	215-4359
Community Development Dir.	Melanie Mintz	215-4339

CITY OF HERCULES111 Civic Drive 94547 (510) 799-8200

Building Permit Tech	Shiva Matinpour	799-8244
City Engineer	Mike Roberts	799-8241
City Manager	David Biggs	799-8200
Planning Director	Holly Smyth	799-8251

CITY OF LAFAYETTE3675 Mt Diablo Blvd., Suite 210 94549 (925) 284-1968

City Engineer	Tony Coe	299-3203
City Manager	Steven Falk	284-1968
Admin Assistance	Dana Anderson	284-1968
	FAX	284-3169
Planning Director	Niroop Srivatsa	299-3206
Public Works Director	Mike Moran	934-3908
Admin Assistance (PM)	Carol Files	284-1968

CITY OF MARTINEZ525 Henrietta Street 94553 (925) 372-3500

City Manager	Brad Kilger	372-3505
Secretary to City Manager	Edna McKinley	372-3505
Comm. Dev. Director	Karen Majors	372-3514
Admin. Services Director	Lianne Marshall	372-3577
Public Works Director	Tim Tucker	372-3562
Planning Manager	Terry Blount	372-3534

TOWN OF MORAGA

2100 Donald Drive (Parks & Recreation only)

329 Rheem Blvd. (Town Manager, Police and Planning only)

Moraga, 94556 (925) 376-2590

Parks Director (Interim)	Carlene McCart	888-7034
Town Manager	Cynthia Battenberg	888-7020
Public Works Director	Edric Kwan	888-7025
Planning Director	Vacant	888-7041

CITY OF OAKLEY3231 Main Street, Oakley 94561 (925) 625-7000

City Manager	Bryan Montgomery	625-7007
Secretary to City Manager	Nancy Marquez	625-7007
	FAX	625-4745
Building Official	Dean Hurney	625-8854
Economic Development Mgr.	Dwayne Dalman	625-7006
Public Works Director/ City Engineer	Kevin Rohani	625-7003
	FAX	625-9194
Planning Manager	Joshua McMurray	625-7004

CITY OF ORINDA22 Orinda Way, 94563 (Mailing Address) (925) 253-4200

Senior Civil Engineer	Jason Chen	253-4279
City Manager	Steve Saloman	253-4220
	FAX	254-2068
Director of Parks & Rec	Todd Trimble	253-4202
Public Works Director	Larry Theis	253-4260
Planning Director	Drummond Buckley	253-4240
City Clerk	Sheri Smith	253-4221

CITY OF PINOLE2131 Pear Street, 94564 (510) 724-9000

City Manager	Michelle Fitzer	724-8933
Assistant to City Manager	Hector De La Rosa	724-9002
Public Works Director/ City Engineer	Tamara Miller	724-9010
Building Division		724-8912
Planning Manager	Winston Rhodes	724-8912

CITY OF PITTSBURG65 Civic Avenue, 94565 (925) 252-6900

Chief Building Official	Curtis Smith	252-4910
City Manager	Joe Sbranti	252-4850
Executive Assistant To City Manager	Rebecca Patague	252-4850
Community Develop Director	Jill Hecht	252-4930
Assistant City Manager	Garrett Evans	252-4860
Planning Manager	Kristen Pollot	252-4920
Asst. Public Works Director	Hilario Mata	252-4936
PW Director/City Engineer	Fritz Mckinley	252-4928

CITY OF PLEASANT HILL100 Gregory Lane, 94523 (925) 671-5270

Chief Building Official	Mike Nielsen	671-5214
City Engineer	Mario Moreno	671-5252
City Manager	June Catalano	671-5267
Secretary to City Manager	Juanita Davalos	671-5283
	FAX	680-0294
Economic Develop. Mgr.	Kelly Calhoun	671-5213
City Planner	Greg Fuz	671-5218

CITY OF RICHMOND450 Civic Center Plaza, P.O. Box 4046 94804 (510) 620-6500

City Manager	Bill Lindsay	620-6512
Secretary to City Manager		620-6512
Director of Finance	Belinda Warner	621-1272
City Clerk	Pamela Christian	620-6513
	FAX	620-6542
Public Works Director	Yader Bermudez	774-6300

CITY OF SAN PABLO (two addresses - same location)

One Alvarado Square, 94806

13831 San Pablo Avenue, 94806 (510) 215-3000

City Manager	Matt Rodriguez	215-3016
Secretary to City Manager	Tina Gallegos	215-3002
	FAX	215-3011
Assistant City Manager	Reina Schwartz	215-3003
Public Works Director	Jill Mercurio	215-3061

CITY OF SAN RAMON2222 Camino Ramon, 94583 (925) 973-2500

Building Official	Debbie Chamberlain	973-2580
Planning Services Director	Debbie Chamberlain	973-2560
Engineering Services Director	Maria (Robinson) Fierner	973-2670
City Manager	George Gorton	973-2530
Secretary to City Manager	Karen McHenry-Smith	973-2532
	FAX	866-0547
Comm. Svc/Parks Director	Kathi Helmann	973-3200
Public Services Director	Maria Fierner	973-2800
Community Develop. Director	Debbie Chamberlain	973-2560

CITY OF WALNUT CREEK1666 North Main Street, 94596 (925) 943-5800

Building Official	Frank Kong	943-5834
Asst. PW Director	Steve Waymire	943-5839
City Manager	Dan Buckshi	943-5812
Secretary to City Manager	Kim Coles	943-5812
	FAX	943-5897
Community Development Dir.	Sandra Meyer	256-3500
Public Works Director	Heather Ballenger	256-3586

FIRE DISTRICTS

Contra Costa County Fire Protection District 4005 Port Chicago Hwy, Ste. 250, Concord 94520	(925) 941-3300
Crockett-Carquinez Fire Protection District 746 Loring Avenue, Crockett 94525	(510) 787-2717
East Contra Costa Fire Protection District 150 City Park Way, Brentwood 94513	(925) 634-3400
El Cerrito Fire Department 10900 San Pablo Avenue, El Cerrito 94530	(510) 215-4450
Kensington Fire Protection District 217 Arlington Ave., Kensington 94707	(510) 527-8395
Moraga-Orinda Fire Protection District 33 Orinda Way, Orinda 94563	(925) 258-4599
Pinole Fire Department 880 Tennent Avenue, Pinole 94564	(510) 724-8970
Richmond Fire District 440 Civic Center Plaza, Richmond 94804	(510) 307-8031
Rodeo-Hercules Fire Protection District 1680 Refugio Valley Road, Hercules 94547	(510) 799-4561
San Ramon Valley Fire Protection District 1500 Bollinger Canyon Rd, San Ramon 94583	(925) 838-6600

GARBAGE COLLECTION

Bayview Refuse Serves Kensington	(510) 237-4614
Brentwood Disposal Service Serves Bethel Island, Byron & Knightsen)	(925) 634-1123
City of Brentwood Serves Brentwood,	(925) 516-5400 x1
Concord Disposal Services Serves Concord	(925) 682-9113
Crockett Garbage Company Serves Crockett, Port Costa	(510) 262-1608
Discovery Bay Disposal Service Serves Discovery Bay Only	(925) 634-3099
East Bay Sanitary Serves El Cerrito	(510) 237-4321
Oakley Disposal Service Serves Oakley	(925) 757-7660
Pittsburg Disposal & Debris Serves Pittsburg, Shore Acres	(925) 432-7172
Republic Services (formerly Allied Waste) Serves Alamo, Antioch, Part of Bay Point, Blackhawk, Canyon, Clayton, Clyde, Danville, Diablo, Lafayette, Martinez, Moraga, Mt. View, Orinda, Pacheco, Pleasant Hill, Rheem, Walnut Creek	(925) 685-4711
Richmond Sanitary Service Serves Richmond, East Richmond Heights, North Richmond, Hercules, Montalvin Manor, Pinole, El Sobrante, Rodeo, Rolling Woods, San Pablo, Tara Hills	(510) 262-1600
Waste Management (Formerly Valley Waste Mgmt) Serves San Ramon	(925) 935-8900

**CONTRA COSTA COUNTY
NON-EMERGENCY LAW ENFORCEMENT NUMBERS**

Emergencies Dial 911

BY AREA

CENTRAL COUNTY	
Clayton	925-673-7350
Concord	925-671-3220
Martinez	925-372-3400
Pacheco	925-646-2441
Pleasant Hill	925-288-4600
Walnut Creek	925-935-6400

EAST COUNTY	
Antioch	925-778-2441
Bay Point	925-646-2441
Brentwood	925-778-2441
Byron	925-646-2441
Clyde	925-646-2441
Knightsen	925-646-2441
Oakley	925-646-2441
Pittsburg	925-646-2441

SOUTH COUNTY	
Alamo	925-646-2441
Blackhawk	925-646-2441
Danville	925-314-3700
Diablo	925-646-2441
Lafayette	925-283-3680
Moraga	925-284-5010
Orinda	925-284-5010
San Ramon	925-646-2441

WEST COUNTY	
Crockett	925-646-2441
El Cerrito	510-237-3233
El Sobrante	925-646-2441
Hercules	510-724-1111
Kensington	925-646-2441
North Richmond	925-646-2441
Pinole	510-724-8950
Port Costa	925-646-2441
Richmond	510-233-1214
Rodeo	925-646-2441

BY CITY

Alamo	925-646-2441
Antioch	925-778-2441
Bay Point	925-646-2441
Blackhawk	925-646-2441
Brentwood	925-778-2441
Byron	925-646-2441
Clayton	925-673-7350
Clyde	925-646-2441
Concord	925-671-3220
Crockett	925-646-2441
Danville	925-314-3700
Diablo	925-646-2441
El Cerrito	510-237-3233
El Sobrante	925-646-2441
Hercules	510-724-1111
Kensington	925-646-2441
Knightsen	925-646-2441
Lafayette	925-283-3680
Martinez	925-372-3400
Moraga	925-284-5010
North Richmond	925-646-2441
Oakley	925-646-2441
Orinda	925-284-5010
Pacheco	925-646-2441
Pinole	510-724-8950
Pittsburg	925-646-2441
Pleasant Hill	925-228-4600
Port Costa	925-646-2441
Richmond	510-233-1214
Rodeo	925-646-2441
San Pablo	510-215-3130
San Ramon	925-646-2441
Walnut Creek	925-935-6400

COUNTYWIDE: CHP	707-551-4100
------------------------	---------------------

LIBRARIES

Reference Hotline.....	(800) 984-4636
Antioch.....	(925) 757-9224
Bay Point	(925) 458-9597
Brentwood.....	(925) 516-5290
Central/Pleasant Hill.....	(925) 646-6434
Clayton.....	(925) 673-0659
Concord.....	(925) 646-5455
Crockett.....	(510) 787-2345
Danville.....	(925) 837-4889
El Cerrito.....	(510) 526-7512
El Sobrante.....	(510) 374-3991
Hercules.....	(510) 245-2420
Kensington.....	(510) 524-3043
Lafayette.....	(925) 385-2280
Martinez.....	(925) 646-9900
Moraga.....	(925) 376-6852
Oakley.....	(925) 625-2400
Orinda.....	(925) 254-2184
Pinole.....	(510) 758-2741
Pittsburg.....	(925) 427-8390
Pleasant Hill (Administration).....	(925) 646-6434
Rodeo.....	(510) 799-2606
San Pablo.....	(510) 374-3998
San Ramon.....	(925) 973-2850
Walnut Creek.....	(925) 977-3340
Ygnacio Valley.....	(925) 938-1481
Project Second Chance.....	(925) 927-3250

PARKS AND COMMUNITY CENTERS

Park	Community	Maintained by
Alamo Elementary School	Alamo	CCC Grounds (925) 313-7052 / after hours (925) 977-4316 / San Ramon Unified School District (925) 824-1878
Livorna Park	Alamo	CCC Grounds (925) 313-7052 - after hours (925) 977-4316
Hap Magee Ranch Park	Alamo	Town of Danville (925) 314-3400
Andrew H. Young Park	Alamo	CCC Grounds (925) 313-7052 - after hours (925) 977-4316
Rancho Romero School Field	Alamo	San Ramon Valley Unified School District (925) 824-1878
Lehman (Viewpoint) Park	Bay Point	Ambrose Recreation (925) 458-1601
Boeger Park	Bay Point	Ambrose Recreation (925) 458-1601
Hickory Meadows Park	Bay Point	Ambrose Recreation (925) 458-1601
Lynbrook Park	Bay Point	Ambrose Recreation (925) 458-1601
Tradewinds	Bay Point	Ambrose Recreation (925) 458-1601
Big Oak Tree Park	Clyde	CCC Grounds (925) 313-7052 - after hours (925) 977-4316
Clyde Park	Clyde	CCC Grounds (925) 313-7052 - after hours (925) 977-4316
Maybeck Park	Clyde	CCC Grounds (925) 313-7052 - after hours (925) 977-4316
Marie Porter Park	Clyde	CCC Grounds (925) 313-7052 - after hours (925) 977-4316
Crockett Community Center	Crockett	Crockett Community Services District (510) 787-2992
Diablo Vista School Ballfields	Danville	San Ramon Valley Unified School District (925) 824-1878
Ravenswood Park	Discovery Bay	Town of Discovery Bay 634-1131
Regatta Park	Discovery Bay	Town of Discovery Bay 634-1131
Slifer Park	Discovery Bay	Town of Discovery Bay 634-1131
Cornell Park	Discovery Bay	Town of Discovery Bay 634-1131
Children's Reading Garden	El Sobrante	CCC Grounds (925) 313-7052 - after hours (925) 977-4316
Montalvin Park	Montalvin Manor	Victoria Skerritt (925) 313-2272
Parkway Estates Park	N. Richmond	CCC Grounds (925) 313-7052 - after hours (925) 977-4316
Spears Circle Park	N. Richmond	CCC Grounds (925) 313-7052 - after hours (925) 977-4316
Creekside Park	Pacheco	CCC Grounds (925) 313-7052 - after hours (925) 977-4316
Fox Creek Park	Pleasant Hill BART	Contra Costa Centre (925) 935-6337
Rodeo Creek Trail	Rodeo	Victoria Skerritt (925) 313-2272
Lefty Gomez Community Center and Ballfield Complex	Rodeo	Victoria Skerritt (925) 313-2272 Modular Building only - CCC Office of Education, John Hild (925) 942-3304
Montarabay Community Center and Softball Complex	Tara Hills	Victoria Skerritt (925) 313-2272

Questions: Call Michael McAfee 925-313-2181 (Special Districts Analyst) or 925-313-2170 (Clerical staff)

CONTRA COSTA COUNTY SANDBAG LOCATIONS (6)

******Internal Use Only******

East County

Byron Airport – 500 Eagle Court

Located by the flag pole across from the main administration portable building. Sandbags are in a plastic trash bin. This site is an 8x8. Point of contact Keith Freitas at 382-1715 or keith.freitas@airport.cccounty.us or Steve Callahan at 383-1384 or steve.callahan@airport.cccounty.us

Senior Center (Former Fire Station) Oakley

Located at the south end of the parking lot next to the large tree adjacent to Delta Station at 215 Second Street. Points of contact are: Shirley Darling at 597-2278 or jnsdarling33@msn.com or Christine Keller at keller@ci.oakley.ca.us. Size is approximately 12 x 8. Opened November 2014

Bay Point Ambrose Park and Recreation Center / CCC Family Service Center - 3105 Willow Pass Road

Located in the parking lot, size is 10x10 with 40 gallon bin. Sandbags are stored in a green plastic bin. Need signage about proper use of sandbags and staff need to remind facility users that the sandbags are not intended to be used as toys. Needs cradle built. Point of contact Doug Long General Manager at 458-1601 extension 4 or dlong@ambroserec.org

West County

Richmond West County Detention Facility – 5555 Giant Highway

Sand is located in the parking lot and sandbags are stored in a gray plastic bin. Size is 8x8. Point of contact is Sgt. Dave Adams at dadam@so.cccounty.us or 510-262-4272 or Lt. Brian Bonthron at 510-262-4273 or bbont@so.cccounty.us. Needs cradle revision. DSW staff will monitor garbage bins.

Central County

Walnut Creek – Howe Homestead

Located in the parking lot at 2950 Walnut Boulevard. Replaced State 4 fire house that closed. Point of contact: Rich Payne at payne@walnut-creek.org or 943-5899 Ext 2436. City provides supplies.

Martinez County Public Works – 2475 Waterbird Way

Sand is located across from fleet fuel station. Sandbags are stored in a grey plastic bin. Size is 6x6. Point of contact is Kevin Lachapelle at 313-7082 or kevin.lachapelle@gsd.cccounty.us. Needs sand cradle.

Notes:

Sandbag inventory are located at West County Public Works corp yard, Byron airport and Waterbird
Typical rainy season per NWS is November 1 through March 31.

Current sand vendor PO #54839 with Reliable Trucking, Inc. at 925-681-6500

Current sandbag vendor PO # F005346 (valid through 10/31/2017) with GEO Options, Inc. at 925-335-9220

Public Works 24/7 number is 313-7000. Weekday point of contact is Margie Valdez at 313-7012 or

Margie.valdez@pw.cccounty.us

Rodeo Fire Battalion Chief (Bryan Craig 766-6335) inquired about an additional site

CONTRA COSTA COUNTY SANDBAG LOCATIONS (6)

East County

Byron Airport – 500 Eagle Court

Located by the flag pole across from the main administration portable building. Sandbags are in a plastic trash bin. This site is an 8x8.

Knightsen Farm Bureau Building/ County Agriculture – 3020 2nd St.

Located at the north end of the parking lot next to the building.
Approximately 12 x 10. Opened January 2016

Bay Point Ambrose Park and Recreation Center / CCC Family Service Center - 3105 Willow Pass Road

Located in the parking lot, size is 10x10 with 40 gallon bin. Sandbags are stored in a green plastic bin.

West County

Richmond West County Detention Facility – 5555 Giant Highway

Sand is located in the parking lot and sandbags are stored in a gray plastic bin. Size is 8x8.

Central County

Walnut Creek – Howe Homestead

Located in the parking lot at 2950 Walnut Boulevard. Replaced State 4 fire house that closed. City provides supplies.

Martinez County Public Works – 2475 Waterbird Way

Sand is located across from fleet fuel station. Sandbags are stored in a grey plastic bin. Size is 6x6.

SandBagsCoSites9-2-15 Updated 1/4/16

G: Grpdata/Admin/lzimm/Phones/SandBagsCoSites9-2-15 Updated 11/2/16

County Sandbag Stations

County Areas	Pick Up Locations*
West County Detention Facility 5555 Giant Highway Richmond	West County. Bring shovel. Bags are located in a large plastic trash bin. The sand cradle is on the south side of the facility parking area.
Byron Airport 500 Eagle Court Byron	East County. Bring shovel. Bags are located in the pump house at the junction of Byron Hot Springs Road and Holey Road. Contact Airport staff at 925-634-0147 for access. The sand cradle is located on the west side of the pump house.
Knightsen Farm Bureau/County Agg 3020 2 nd St. Knightsen	East County. Bring shovel. Bags and sand are located at the north end of the parking lot next to the building.
Ambrose Recreation Center 3105 Willow Pass Road Bay Point	East County. Bring shovel. Bags are located in a large plastic trash bin on the west side of the parking lot next to the fence line approximately $\frac{3}{4}$ of the way back to the playing fields
2475 Waterbird Way Martinez (across from County fueling station)	Central County. Bring shovel. Bags are located in a large plastic trash bin located at the parking stall north of the fueling station. Nearest cross street is Imhoff Drive.
Howe Homestead 2950 Walnut Boulevard Walnut Creek	Central County. Bring shovel. Bags and sand located in the parking lot.

*Call the County Public Works Maintenance Division at 925-313-7000 to report sandbag station concerns.

City Sandbag Stations

Incorporated Areas	Costs	Limits	Pick Up Locations	Contact
Antioch	\$.50 empty \$1.00 filled	Limit of 20 Staff & Do It Yourself	Maintenance. Service Center 1201 W. 4 th Street	925-779-6950 or Dispatch 925-778-2441
Brentwood	No Charge	Limit of 10 Do It Yourself	Corp Yard 2201 Elkins Way	Police Dispatch 925-778-2441
Concord	No Charge	Limit of 50 Staff & Load Yourself	City Corp Yard 1455 Gasoline Alley	Police Dispatch 925-671-3333
Clayton	St 25 free & >25= \$.50 empty \$1.00 filled	Limit of 50 Do It Yourself	6000 Heritage Trail	Clayton Police Dept. 925-673-7350
Danville	No Charge	20 per person Do It Yourself	1000 Sherborne Hills Road	925-314-3450 or Dispatch 925-820-2144
El Cerrito	No Charge	10 bags to El Cerrito/ Kensington residents only (ID required)	Sand Pile 7501 Schmidt Lane	510-215-4369
Hercules	No Charge	No Limit Do It Yourself	2001 Refugio Valley	Police Dispatch 510-724-1111
Lafayette	No Charge for 20 bag - after that \$5.00 per bag	20 bag limit Prefilled bags available	Public Works Dept Corp Yard 3001 Camino Diablo or Mt. Diablo Blvd @ Risa Road – sand and bags available, do it yourself Contact for city: (925) 934-3908	Sheriff's Office Dispatch 925-646-2441
Martinez	No Charge	No Limit Do It Yourself	Rankin Park-100 Buckley Street Nancy Boyd Park-100 Church Street City Hall-525 Henrietta Street Highland Ave Park-Merrithew Drive 750 Allen Street West end of F Street	Dispatch 925-372-3440
Oakley	No Charge	No Limit Do It Yourself	South end of parking lot next to large tree adjacent to Delta Station, 215 Second Street.	925-597-2278
Orinda/Moraga Fire Dept	No Charge	No Limit Do It Yourself	Station #43-20 Via Las Cruces, Orinda Station #44- 295 Orchard Road, Orinda	925-258-4599
Pinole	No Charge	No Sand Limit Bring own bags, ties, & tools Sand available year round	City Parking Lot – 1281 Plum Street	Public Works 510-724-8947
Pittsburg	No Charge	10 bag limit	Corporation Yard – 357 E. 12 th Street	925-252-6966
Pleasant Hill	No Charge	Do It Yourself Seasonal Only	City Hall Parking Lot–100 Gregory Lane at Trelany Road Community Center Parking Lot–320 Civic Drive Upper Parking Lot of PH Middle School- Hawthorne Drive east of Patterson Boulevard In Extreme Storm Event Only: Safeway Parking Lot (Patterson Boulevard at Oak Park Boulevard)	Police Department 925-288-4600
Richmond	No Charge	Seasonal Only	Corporation Yard 13 th and Bissell Avenue Business hours: 7:30-4:00	510-231-3011 Monday-Friday

San Pablo	No Charge	Seasonal Only City residents only	John Hubert Davis Park 1665 and 1667 Folsom Avenue and 17 th Street	510-215-3070/3079
San Ramon	No Charge	15 bag limit	Athan Downs Park – Montevideo Drive and Davona Drive Parking Lot San Ramon Central Park – 12501 Alcosta Blvd. at the Bollinger Canyon Rd. entry San Ramon Dougherty Valley Sport Park – 5261 Sherwood Way Parking Lot	925-973-2800 Monday-Friday After Hours Sheriff's Dispatch 925-646-2441
Walnut Creek	No Charge	Seasonal Only	Heather Farms –north parking lot off San Carlos Larkey Park – 2771 Buena Vista Avenue Lancaster Road at Orchard Lane Howe Homestead Parking Lot- 2950 Walnut Boulevard	925-943-5854

G:\Admin\lzimm\Phones\City Sandbag Distribution 11-2-16.doc

SANITARY DISTRICTS

Byron Sanitary District (925) 634-3613
7995 Burns Road
Byron 94514

Central Contra Costa Sanitary District (925) 228-9500
5019 Imhoff Place Emergency (925) 933-0955
Martinez 94553 or (925) 933-0990
- Odor Hotline (925) 335-7703

Crockett/Valona Sanitary District (510) 787-2992
PO Box 578, 628 - 2nd Ave., #206
Crockett 94525
Problems call West County Waste Water District

Delta-Diablo Sanitation District (925) 756-1900
2500 Pittsburg/Antioch Highway Fax (925) 756-1961
Antioch 94509-0092

Discovery Bay Community Services District (925) 634-1131
1800 Willow Lake Road
Discovery Bay 94505

Dublin-San Ramon Services District (925) 828-0515
7051 Dublin Boulevard Fax (925) 829-1180
Dublin 94568
Waste Water Treatment Plant (925) 846-4565

Ironhouse Sanitary District (925) 625-2279
450 Walnut Meadows Drive Fax (925) 625-0169
PO Box 1105, Oakley 94561

Mt. View Sanitary District (925) 228-5635
3800 Arthur Road (End of Arthur Road) Fax (925) 228-7585
PO Box 2757, Martinez 94553

SANITARY DISTRICTS

(continued)

Rodeo Sanitary District (510) 799-2970
800 San Pablo Avenue Fax (510) 799-5403
Rodeo 94572

Port Costa Sanitary District of Crockett (510) 787-2992
(Crocket Community Services District (CSD) Fax (510) 787-2459

Contra Costa Sanitation District No.6
Tim Tucker, City of Martinez (925) 372-3562
(Stonehurst Subdivision)

Stege Sanitary District (510) 524-4668
7500 Schmidt Lane Fax (510) 524-4697
El Cerrito 94530

West County Wastewater District (510) 222-6700
2910 Hilltop Drive Fax (510) 222-3277
Richmond 94806 Emergency (510) 222-6799

SANITARY DISTRICT for CITIES

This listing shows the appropriate sanitary district
for each city or area in Contra Costa County

ALAMO	Central CC Sanitary District	(925) 228-9500
ANTIOCH	Delta Diablo Sanitary District	(925) 756-1900
BAY POINT	Delta Diablo Sanitary District	(925) 756-1900
BYRON	Byron Sanitary District	(925) 625-2279
BETHEL ISLAND	Ironhouse Sanitary District	(925) 625-2279
CLYDE	Central CC Sanitary District	(925) 228-9500
CONCORD	Central CC Sanitary District	(925) 228-9500
CROCKETT	Crockett/Valona Sanitary District	(510) 787-2992
	Sewage Overflow	(510) 303-2313
DANVILLE	Central CC Sanitary District	(925) 228-9500
DIABLO	Central CC Sanitary District	(925) 228-9500
DISCOVERY BAY	Discovery Bay Com. Serv. Dist.	(925) 634-1131
DUBLIN	Dublin-San Ramon Services District	
	Admin	(925) 828-0515
	Sewage	(925) 846-4565
EL CERRITO	Stege Sanitary District	(510) 524-4668
EL SOBRANTE	West County Wastewater District	(510) 222-6700
KENSINGTON	Stege Sanitary District	(510) 524-4668
LAFAYETTE	Central CC Sanitary District	(925) 228-9500
MARTINEZ	Mt. View Sanitary District	(925) 228-5635
	or Central CC Sanitary District	(925) 228-9500
	(Stonehurst Subdivision only)	(925) 313-2286
MORAGA	Central CC Sanitary District	(925) 228-9500
OAKLEY	Ironhouse Sanitary District	(925) 625-2279
ORINDA	Central CC Sanitary District	(925) 228-9500
PACHECO	Central CC Sanitary District	(925) 228-9500
PINOLE	West County Wastewater District	(510) 222-6700
PITTSBURG	Delta Diablo Sanitary District	(925) 756-1900
PLEASANT HILL	Central CC Sanitary District	(925) 228-9500
RODEO	Rodeo Sanitary District	(510) 799-2970
RICHMOND	West County Wastewater District	(510) 222-6700
RICHMOND ANNEX	Stege Sanitary District	(510) 524-4668
SAN PABLO	West County Wastewater District	(510) 222-6700
SAN RAMON	Central CC Sanitary District	(925) 228-9500
	or Dublin-San Ramon Services	
	Administration	(925) 828-0515
	Sewage	(925) 846-4565
WALNUT CREEK	Central CC Sanitary District	(925) 228-9500

SCHOOL DISTRICT'S

CCC Superintendent of Schools
Superintendent Joseph A. Ovick
77 Santa Barbara Road
Pleasant Hill, CA 94523

925-942-3388
FAX 925-942-3482
www.ccoc.kiz.ca.us

Acalanes Union High School District
Superintendent John Stockton
1212 Pleasant Hill Road
Lafayette, CA 94549

925-280-3900
FAX 925-932-2336
www.acalanes.kiz.ca.us

Antioch Unified School District
Superintendent Donald Gill
510 G Street
Antioch, CA 94509

925-776-2020
FAX 925-754-7009
www.antioch.kiz.ca.us

Brentwood Union School District
Superintendent Dr. Merrill M. Grant
255 Guthrie Lane
Brentwood, CA 94513

925-513-6300
FAX 925-634-8583
www.brentwood.kiz.ca.us

Byron Union School District
Superintendent Ken Jacopetti
14301 Byron Highway
Byron, CA 94514

925-809-7500
FAX 925-634-9421
www.byronusd.com

Canyon School District
Superintendent Gloria Faircloth
Pinehurst Road/P. O. Box 187
Canyon, CA 94516

925-376-4671
FAX 925-376-2343
www.canyon.kiz.ca.us

Contra Costa Community College District
Chancellor Helen Benjamin
500 Court Street
Martinez, CA 94553

925-229-1000
FAX 925-370-2019
www.4cd.edu

John Swett Unified School District
Superintendent Mike McLaughlin
400 Parker Avenue
Rodeo, CA 94572

510-245-4300
www.jsusd.org

Knightsen School District

925-625-0073

Superintendent Theresa Estrada
1923 Delta Road/P. O. Box 265
Knightsen, CA 94548

FAX 925-625-8766
www.knightsen.kiz.ca.us

Lafayette School District
Superintendent Fred Brill
3477 School Street/P. O. Box 1029
Lafayette, CA 94549

925-927-3500
FAX 925-284-1525
www.lafsd.kiz.ca.us

Liberty Union High School District
Superintendent Eric Volta
20 Oak Street
Brentwood, CA 94513

925-634-2166
FAX 925-634-1687
www.libertyunion.school/wires.net

Martinez Unified School District
Superintendent Rami Ruth
921 Susana Street
Martinez, CA 94553

925-335-5800
FAX 925-335-5960
www.martinez.k12.ca.us

Moraga School District
Superintendent Bruce K Burns
1540 School Street
Moraga, CA 94556

925-376-5943
FAX 925-376-8132
www.moraga.k12.ca.us

Mt. Diablo Unified School District
Superintendent Steven Lawrence
1936 Carlotta Drive
Concord, CA 94519

925-682-8000
FAX 925-682-0250
www.mdusd.org

Oakley Union School District
Superintendent Richard Rogers
91 Mercedes Lane
Oakley, CA 94561-4617

925-625-0700
FAX 925-625-1863
www.oesd.k12.ca.us

Orinda Union School District
Superintendent Dr. Joe Jaconette
8 Altarinda Road
Orinda, CA 94563

925-254-4901
FAX 925-253-0719
www.orinda.k12.ca.us

Pittsburg Unified School District
Superintendent Linda Rondeau
2000 Railroad Avenue
Pittsburg, CA 94565

925-473-2300
FAX 925-473-4273
www.pittsburg.k12.ca.us

San Ramon Valley Unified School District
Superintendent Ginny Haddad
699 Old Orchard Drive
Danville, CA 94526

925-552-5500
FAX 925-838-3147
www.srvusd.k12.ca.us

Walnut Creek School District
Superintendent Patty Wool
960 Ygnacio Valley Road
Walnut Creek, CA 94596

925-944-6850
FAX 925-944-1768
www.walnutcreeksd.org

West Contra Costa School District
Superintendent Bruce Harter
1108 Bissell Avenue, Room 100
Richmond, CA 94801

510-231-1100
FAX 510-236-6784
www.wccusd.net

UTILITIES

AT&T (800) 288-2020

AT&T U-VERSE (800) 288-2020

COMCAST (800) 945-2288

PG&E (800) 743-5000

WAVE (800) 427-8686

WATER DISTRICTS

- Antioch City Water (925) 779-7060
200 H Street
Antioch 94509 www.ci.antioch.ca.us/citygov/publicworks/water
(Antioch)
- Byron-Bethany Irrigation District (209) 835-0375
7995 Bruns Road Fax (209) 838-2869
Byron 94514
(Byron)
- Golden State Water (925) 458-3112
53B Manor Drive
Bay Point 94565 www.gswater.com
(Bay Point)
- Contra Costa Water District (925) 688-8000
1331 Concord Avenue
Concord 94520 www.ccwater.com
PO Box H20
Concord, 94524
(Antioch, Bay Point, Clayton, Clyde, Concord, Martinez, Oakley, Pacheco,
Pittsburg, Pleasant Hill, Port Costa)
- Diablo Water District (925) 625-3798
87 Carol Lane Fax (925) 625-0814
Oakley 94561 www.diablowater.org
(Oakley)
- East Bay Municipal Utility District 1-866-403-2683
375 - 11th Street, Oakland 94607 www.ebmud.com
(Alamo, Danville, Diablo, Dublin, El Cerrito, Kensington, Lafayette, Moraga,
Orinda, Pinole, Pleasant Hill, Rodeo, Richmond, San Pablo, San Ramon, Walnut
Creek including Dougherty Valley, San Ramon and Windemere area, Walnut Creek)
- East Contra Costa County Irrigation District (925) 634-3544
1711 Sellers Avenue Fax (925) 634-0897
Brentwood 94513 www.contracostalafco.org
(Brentwood, Holland Tract)
- Martinez Water System (925) 372-3575
525 Henrietta Street
Martinez 94553 www.cityofmartinez.org
(Martinez)

A

ABAG- Association of Bay Area Government (510) 464-7900
Metro Center (MTC)
101 8th Street
Oakland, 94607

ABANDONED CARS

- County, Sheriff 646-2441
- CHP 646-4980
- City (Phone appropriate City) *****
- Notice of intent to abate (Sheriff's) 646-2441
- Private Property - Building Inspection 674-7210

ABANDONMENT

- Drawings & History
Public Works
- Records Counter staff 313-2282
or 313-2356

ABANDONMENT OF EASEMENTS

- Public Works
- Real Estate staff 313-2012

ABANDONMENT OF ROADS

- Public Works
- Real Estate staff 313-2012

ABANDONED REFRIGERATORS

- Public Works
- Maintenance (on county roads/right of ways) 313-7000
- General Services (on county property) 646-4322

ABATEMENT (to clear abatement on property)

- Department of Conservation and Development
- Building Inspection, Code Enforcement 674-7210

ABSENTEE BALLOTS 335-7800

ABUTTER'S RIGHTS

- Public Works
- Engineering Services, Records Counter staff 313-2000

AC TRANSIT	(510) 891-4777
ACCEPTANCE OF IMPROVEMENTS	
Public Works	
- Engineering Services, Counter staff	313-2000
ACCIDENT REPORTS	
Employee injuries	
Department of Conservation & Development	
-Building Inspection	335-1178
Public Works	
-Administration HR	313-2107
CHP, Traffic	313-2187
Public Reports for:	
Traffic	313-2187
California Highway Patrol	646-4980
ACCOUNTS PAYABLE	
- Public Works - Account Clerk	313-2339
ACCOUNTS RECEIVABLE	
- Public Works - Account	313-2209
ADA (AMERICA WITH DISABILITIES ACT)	
-Public Works employee - Administration HR	313-2107
-County employee, Human Resources	335-1770
ADA SPECIFICATIONS OR COMPLIANCE	
Public Works	
- Engineering Services counter staff	313-2000
Department of Conservation & Development	
-Community Development	674-7200
-Building Inspection	
Complaint of private property	674-7200
Specifications	674-7200
ADDITION (Adding space)	
Department of Conservation & Development	
-Planning/Building Inspection	674-7200

A

ADDITION (Not adding space)

Department of Conservation & Development
-Building Inspection

674-7200

ADOPT-A-HIGHWAY

-Caltrans

(510) 286-6171

ADOPT-A-ROAD (County Road)

Public Works

- Maintenance staff

313-7000

ADDITIONS TO HOUSES

Department of Conservation & Development
- Planning/Building Inspection

674-7200

ADDRESS (Changes/Questions)

Department of Conservation & Development
- Community Development, Todd Fitzsimmons

674-7810

ADMINISTRATIVE BULLETINS (from CAO)

www.co.contra-costa.ca.us or www2.co.contra-costa.ca.us

ADMINISTRATOR, COUNTY (See County Administrator)

AERIAL PHOTOGRAPHS

(www.ccmaps.us - Click on interactive mapping. Zoom in on general area & turn on parcels & orthos)

Public Works

- Records

313-2282

- Information Technology - Barry Schamach

313-2185

- Refer to GIS

AFFIRMATIVE ACTION

CAO

- Antoine Wilson

335-1045

Department of Conservation & Development

- Kelli Zenn

674-7726

Public Works

- Administration HR

313-2107

A

AFFORDABLE HOUSING INFO (www.ccreach.org) Department of Conservation and Development	674-7884
AFSCME - Local 2700 and 512 Union	228-4400
AFTER HOURS EMERGENCY - Sheriff's Communication Center	646-2441
AGE OF HOUSE - Assessor	313-7500
AGENCY REQUEST FROM CITIES Department of Conservation and Development Advance Planning - Will Nelson (including all mailed in requests)	674-7791
AGENDA Public Works Clerk of the Board	313-2370 335-1900
AGING & ADULT (in Contra Costa County) 400 Ellinwood Way Pleasant Hill 94523	(925) 229-8434 or (925) 602-4172 or (800) 510-2020
AGRICULTURE, DEPT. OF - Bees, for referral to Apianists - Weights and Measures	646-5250 646-5250
AIR POLLUTION CONTROL -Complaints	(415) 749-5000 (800) 334-ODOR
ALAMO CREEK Department of Conservation and Development Current Planning - Ruben Hernandez	674-7785

A

ALAMO HIGHLANDS

Department of Conservation and Development

Current Planning

- John Osborne

674-7793

ALAMO SPRINGS

Department of Conservation and Development

Current Planning

- John Osborne

674-7793

ALAMO SUMMIT

Department of Conservation and Development

Current Planning

- Telma Moreira

674-7783

ALCOHOL (DEEMED APPROVED ORDINANCE)

Department of Conservation and Development

Current Planning

- Gary Kupp

674-7799

ALTAMONT WINDMILLS (See Windmills)

ALUC (Airport Land Use Commission)

Department of Conservation and Development

Current Planning

- Jamar Stamps

674-7832

AMTRAK

(800) 872-7245

ANIMAL LICENSE

335-8310

ANIMAL PERMITS

Department of Conservation and Development

Current Planning

- Kennels

674-7200

Fish & Game

- for exotic animals

(707) 944-5500

A

ANIMAL SERVICES

- Martinez-4800 Imhoff Place (Main Office) 335-8300
- Pinole (510) 374-3966
- Freeway, Caltrans 939-0400
- Antioch 779-6989

ANNEXATIONS TO CITIES (See LAFCO)

Public Works

- Records 313-2282 or 313-2356

ANNEXATIONS TO CITIES (continued)

Department of Conservation and Development

- Rich Seithel, Chief Annexations & Economics
Stimulus Program 674-7869

ANNEXATIONS, Lighting

Public Works

- Special Districts 313-2286

ANNUAL TRANSPORTATION PERMIT

- Permit Center, Bob Hendry 674-7744

APPEALS (CURRENT PLANNING PROJECTS)

Department of Conservation and Development

Current Planning

- Hiliana Li 674-7792

APPEALS OF ASSESSMENT

- Clerk of the Board 335-1901

APPLIANCE REPLACEMENT (Low Energy)

Department of Conservation and Development

- Weatherization Program 674-7214

APPLICATION & PERMIT CENTER (APC)

674-7200

A

APPLICATIONS for Development

Department of Conservation and Development

- Current Planning 674-7200

Public Works

- Engineering Services 313-2170

APPLICATIONS for Plan Review

Public Works

- Engineering Services 313-2170

APWA (American Public Works Association)

2345 Grand Blvd., Suite 500

Kansas City, MO. 64108-2625 (816) 472-6100

Norcal Chapter (510) 932-3203

APPROPRIATION ADJUSTMENT

Public Works

- Finance 313-2372 or 313-2232 or
313-2376

ARBITRATORS

Center for Human Development 687-8844
ext. 301

ARBORIST (COUNTY CONTRACTS WITH)

-Hort Science (Pleasanton) 925-484-0211

-Tree Decisions / Dennis Yniguez 510-540-0491

ARCHITECTURAL

Public Works

- Capital Projects 313-2102

- Bidders Information 313-2102

AREA OF BENEFIT

Program

Public Works - Transportation Engineering

- Mary Halle 313-2327

Public Works - Maintenance

- Chris Lau 313-2293

AREA OF BENEFIT (continued)

Fees

Public Works - Finance

- Account Clerk 313-2339

ARMY CORP OF ENGINEERS

- Sacramento (916) 557-5100

- San Francisco (415) 977-8618

ARSON TIP LINE

-CCC Fire District (866) 50-ARSON

AS BUILTS

Public Works

- Records counter staff 313-2356

or 313-2282

ASBESTOS

- Bay Area Air Quality Management (415) 749-5000

or (510) 771-6000

or (800) 334-6367

- Complaints, BAAQMD (800) 334-6367

- Environmental Protection Agency (510) 744-1087

or (800) 468-1786

- Hazardous Materials 335-3200

ASPHALT (Work being done now)

Contractors doing work

- Public Works Construction 313-2320

County crews doing work

- Public Works Maintenance 313-7000

ASSESSMENT DISTRICTS, County

Public Works

- Special Districts 313-2286

ASSESSMENT (When it was paid) (Tax Bill)

Lighting, landscape, sanitation

Public Works Special Districts 313-2286

A

ASSESSMENT FLOOD CONTROL MAINTENANCE

Public Works

- Finance 313-2121

ASSESSORS PARCEL MAPS, Copies & Information

Public Works

- Records 313-2282 or 313-2356

Assessors Office 313-7400

ASSIGN PARCEL NUMBERS

-Assessor's Office 313-7400

ASSISTED LIVING (Rental Units)

Department of Conservation and Development

- Kara Douglas 674-7884

ASSOCIATION OF BAY AREA GOVERNMENTS- (see ABAG)

http://www.abag.ca.gov/abag.local_gov/city/city.html

AT&T EMERGENCY REPAIRS

"611"

Dial "611" or 1-888/723-2624

ATMOSPHERIC STORAGE CONTAINERS (See Refinery Information)

AUCTION/CARS

Public Works

- Fleet Services 313-7074

AUDITOR/CONTROLLER'S OFFICE

646-2181

AUTOMOBILES

Public Works

- Fleet Services 313-7074

AVIATION ADVISORY COMMITTEE

- Buchanan Airport 646-5722

AWARD of PUBLIC WORKS DEPARTMENT CONSTRUCTION CONTRACTS

Construction 313-2233 or 313-2330

B

BACKFILL/SANITATION DISTRICT	
- Bethel Island Only, Ironhorse Sanitary District	625-2279
BACKFLOW TESTING	
Public Works	
- Engineering Services Counter staff	313-2000
BARRICADES	
Public Works	
- Traffic control devices, fixed	313-2021
- Portable, Maintenance	313-7000
BART	
- Bay Area Rapid Transit	(510) 464-6000
- Information	676-2278
BASE MAP BOOKS	
Public Works	
- To purchase	313-2000
BAY AREA AIR POLLUTION CONTROL	
- San Francisco	(415) 771-6000
BAY AREA AIR QUALITY MANAGEMENT DISTRICT	
(BAAQMD)	(415) 749-5000
-Complaints	(800) 334-6367
BAY POINT BART/WATERFRONT PROJECT MANAGER	
Department of Conservation and Development	
-Maureen Toms	674-7878
BAY POINT REDEVELOPMENT PROJECT MANAGER	
Department of Conservation and Development	
- Maureen Toms	674-7878
BAY POINT ZONING INQUIRES	
-Application and Permit Center	674-7200

B

BEES	
- Referral to Apiarists, Agriculture	646-5250
BENCH MARKS	
Public Works	
- Records	313-2282 or 313-2356
BENEFITS	
- Human Resources	335-1746
BERMS/DIKES	
- Along Roadside, Public Works Maintenance	313-7000
- Flood Control Channel, EBRPD	(510) 531-9300
- Iron Horse Trail /SP right of way, Park District	(510) 531-9300
BETTER BUSINESS BUREAU	(510) 238-1000
BICYCLE LOCKERS	
651 Pine Street	
-CAO - Sharon Brown	335-1052
255 Glacier Drive	
-Public Work - Admin Secretary	313-2204
30 Muir	
-Department of Conservation and Development	674-7832
BIDS, (Ask what kind of work is to be done)	
Public Works	
- Projects advertised	
Design	313-2320
- After bids are received,	
Construction	313-2330 or 313-2233
- Future, Design	313-2320

B

BIDS (County buildings)	
Public Works	
- Capital Projects	313-2102
BIKE PATHS	
Department of Conservation & Development	
- Maps, Community Development	674-7833
- Along CC Canal,	
Water District in area	*****
CC Water District	688-8000
- Next to roadways, Public Works Maintenance	313-7000
- Along flood control channels, EBRPD	(510) 531-9300
- Along the SP Railroad Corridor/Ironhorse Trail, East Bay Regional Park District	(510) 531-9300
BILLS/INVOICES	
Department of Conservation and Development	
- Community Development, Victoria Isip	674-7895
Public Works	
- Finance, Mike Mann	313-2209
BIRTH, DEATHS (VITAL STATISTICS)	
- Clerk Recorder	335-7900
550 Escobar Avenue, Martinez	
BLACKHAWK HOMEOWNERS ASSOC.	736-6440
BLAKEMONT STUDY	
Public Works	
- Engineering Services, Susan Cohen	313-2160
Department of Conservation & Development	
- Community Development	674-7200
BLOCK GRANT	
Department of Conservation & Development	
- Community Development Block Grant (CDBG) Program	674-7208

B

BLOCK PARTY PERMITS

Public Works

- Transportation Engineering staff 313-2187
- Application and Permit Center
- With Road Closure, Bob Hendry 674-7744

BLUEPRINTS (Copies of maps, R/W, Construction Plans, Outside prints)

Public Works

- Records 313-2282 or 313-2356

BLUEPRINTS OF A HOUSE

Department of Conservation & Development

- Building Inspection 674-7213

BLUEPRINTS OF STORM DRAIN LINES

Public Works

- Flood Control, Counter staff 313-2000
- Records 313-2282 or 313-2356

BOARD ORDERS

Department of Conservation & Development

- Building Inspection, Trish Dominguez 674-7723
- Community Development, Joyce Ring-Reaves 674-7866

Public Works

- Executed Board Orders 313-2370

BOARD RESOLUTIONS

For subdivision completions

Public Works

- Engineering Services 313-2315 or 313-2352

Copies of executed Board Orders

Department of Conservation & Development

- Building Inspection, Trish Dominguez 674-7723
- Community Development (contact appropriate planner)
or Clerk of the Board 335-1900
- Public Works 313-2370

B

BOARD OF SUPERVISORS

- District I-John Gioia 510-231-8686
- District II-Candace Andersen 957-8860
- District III-Diane Burgis 252-4500
- District IV-Karen Mitchoff 521-7100
- District V-Federal Glover 608-4200

BONDS, INSURANCE

- For Contracts
 - Public Works
 - Construction 313-2330
- For encroachment permits,
 - Application & Permit Center, Bob Hendry 674-7744
- For Grading Permits
 - Department of Conservation & Development
 - Building Inspection 674-7718

BONDS (For Subdivision Work)

- Public Works
 - Engineering Services, counter staff 313-2000

BOUNDARIES (MAPS)

- Public Works
 - Roads, Records 313-2282 or 313-2356
- Assessor
 - Private Property 313-7400

BRANDEN ISLAND

(916) 777-6671

BREAKING GROUND

- Call Utility Company Directly (see Utilities) *****
- Application and Permit Center
 - Work in County Right of Way - Bob Hendry 674-7744
- Department of Conservation & Development
 - Building Inspection
 - Private property - Grading 674-7204

B

BRIDGES

Public Works

- Inspection for structural assessment,
Design 313-2278
- Traffic surface, rails, approaches
Maintenance, 313-7000
- When a bridge was designed
Design/Construction 313-2278
- Height and width
Design/Construction 313-2278
- Thoroughfare Fees
Transportation Engineering 313-2327
- Under construction
Construction 313-2320
- Weight rating
Application and Permit Center
- Bob Hendry 674-7744

BUCHANAN FIELD AIRPORT

- 550 Sally Ride Drive, Concord 681-4200
Department of Conservation & Development
Community Development (Planning/off airport only)
- Jamar Stamps 674-7832

BUG TRAPPING

- Gypsy Moths & Medflies Only
- Department of Agriculture 646-5250

BUILDABLE LOT

- County
Department of Conservation & Development
- Community Development 674-7200
City, appropriate city (See pages 6-10) *****

B

BUILDING CODES

County

Department of Conservation & Development

- Building Inspection 674-7745

Violations and complaints 674-7210

State (916) 443-6008

BUILDING INSPECTIONS

Department of Conservation & Development

Building Inspection

- Information/Scheduling, Grading and (855) 323-2626,

Additions to a house 646-4108 or 674-7204

BUILDING MAINTENANCE

- County Buildings

Public Works - Facilities Maintenance 313-7052

BUILDING ON AN EASEMENT

- Application & Permit Center, Bob Hendry 674-7744

BUILDING PERMITS AND FEES

Department of Conservation & Development

Building Inspection

- Codes & Fees 674-7200

- History 674-7213

- Inspection 646-4108

- Requirements 674-7237

- Status 674-7959

- Weekly Reports 674-7702

BUILDING PERMIT RELEASES

Department of Conservation & Development

- Building Inspection 646-4108

B

BUILDING SETBACKS

- Department of Conservation & Development
- Community Development (Building to Property Line) 674-7200
- Building Inspection (Building to Building) 674-7200

BUILDING & ZONING

- Building Inspection Complaints 674-7200

BUREAU OF LAND MGMT. (FEDERAL) (916) 985-4474

BUS STOPS

- (See Transit District for area) *****

BUSINESS (Home Occupation)

- Department of Conservation & Development
- Community Development-Planner 674-7205

BUSINESS LICENSE

- Unincorporated area, Tax Collector 957-5290
- Fictitious name DBA, Clerk's Office, Rm. 103 335-7905
- City, appropriate city *****

BYRON AIRPORT

- 500 Eagle, Byron 634-0147
- Department of Conservation & Development
- Current Planning/off Airport only-James Stamp 674-7832

BYRON HOT SPRINGS

- Department of Conservation & Development
- Current Planning-Lashun Cross 674-7786

BYRON PARKS II

- Department of Conservation & Development
- Bob Calkins 674-7877



CABLE TV Franchise
- CAO (report complaints w/cable company) 335-1048

CALENDARS, BOARD OF SUPERVISORS
Department of Conservation & Development
- Building Inspection
- Community Development
Public Works 313-2370

CAL-EPA
- Website, www.calepa.ca.gov
- Hotline 1-800-CLEANUP

CALIFORNIA BOARD OF ENGINEERS (916) 263-2222

CALIFORNIA BUILDING STANDARDS COMMISSION
- California Energy Commission (916) 323-6363
- Interpretive Manual/Energy Forms (916) 654-5200
- Web site, www.energy.ca.gov

CALIFORNIA ENVIRONMENTAL QUALITY ACTS (CEQA)
Department of Conservation & Development
Community Development
- Danielle Kelly 674-7789
Public Works
- Environmental Manager 313-2311

CALIFORNIA PUBLIC UTILITIES COMMISSION
PG&E complaints 800-649-7570

CALIFORNIA HIGHWAY PATROL
5001 Blum Road, Martinez 94553 646-4980
- Dispatch (707) 551-4110

CALIFORNIA ROAD SYSTEM MAPS
Public Works
- Records 313-2282 or 313-2356



CAL-OSHA

- State 602-6517
- County, Risk Management 335-1400

CALTRANS

- (800) 427-7623 or
- Information (510) 286-6171
- Maintenance 926-6112
- Highway Maps, Public Works Records 313-2282
- Claims (510) 286-5806
- Fax number (510) 286-5229
- If light is out or for Graffiti (510) 638-1201
- Highway 4 construction (925) 756-0721

CALL IN SHEETS FOR CREWS (Daily Work Schedule)

- Public Works
- Maintenance 313-7000

CANAL, CONTRA COSTA

- CC Water District 688-8000

CAPITAL IMPROVEMENT PROJECTS

- Public Works
- Roads
- Transportation 313-2187
- County Property
- Capital Projects 313-2102

CAR POOL (County Personnel)

- Department of Conservation & Development
- Community Development
- Questions & Applications - Jamar Stamps 674-7832

CARPOOL HOUR INQUIRIES

www.bata.mtc.ca.gov/tolls/schedule.htm

CARNIVAL ON PRIVATE PROPERTY

- Department of Conservation & Development
- Community Development 674-7200



CARPENTER SHOP

Public Works

- Facilities Maintenance 313-7052
or 313-7059

CARS

- Abandoned (Private Property)
Building Inspection 674-7210
- Abandoned (County), Sheriff 313-2500
- Damaged due to construction, Risk Management 335-1400
- Purchased, Public Works/
Fleet Manager, Carlos Velasquez 313-7071
- Fleet Service Center 313-7074
- Public Complaints (re:County Vehicles- Call Fleet Svcs) 313-7071

CATCH BASIN

- Public Works Flood Control, Counter staff 313-2000

CC&R'S (Covenants, Conditions and Restrictions)

Department of Conservation & Development

- Community Development 674-7200
- Recorder's Office 335-2360
- Homeowners Association *****

CCTV (Contra Costa Television)

10 Douglas Dr., Suite 210, Martinez 313-1180

CDBG

Department of Conservation and Development 674-7200

CELL TOWERS

Public Works

- Real Estate 313-2220

Department of Conservation and Development

- Community Development 674-7200

CERTIFICATE OF CORRECTION

Public Works

- Surveys, Jim Stein 313-2343
- Forms 313-2282

C

CERTIFICATE OF INSURANCE

- Need one, Risk Management 335-1450
- Public Works
- Finance, Paulette Denison 313-2375
- Flood Control Counter staff 313-2000
- Construction 313-2330
- Developer, Engineering Services, Counter staff 313-2000
- Application & Permit Center
- Road, Sidewalk, Bob Hendry 674-7744

CERTIFIED PAYROLL

- Public Works
- Construction 313-2330

CHANNEL/CREEK

- Keys to channel - Public Works Maintenance 313-7000
- Access utility companies to easements,
(encroachment permit required from others)
- Permits, Application & Permit Center, Bob Hendry 674-7744

CHECK LIST FOR CORNER RECORDS

- Public Works
- Records of Survey - Records 313-2282
- Improvement Plans/Final Map 313-2343

CHILD ABUSE HOTLINE (877) 881-1116

CHILD CARE FEES WITH NEW CONSTRUCTION

- Department of Conservation & Development
- Community Development
- Jennifer Cruz 674-7790

CHILD SUPPORT SERVICES Toll Free (866) 901-3212 or
957-7300

CHUCK HOLES / POT HOLES

- County Road
- Public Works Maintenance 313-7000
- Private Road (property owner)
- City Road (appropriate city)

C

CITY/COUNTY LIMIT LINES	
Public Works	
- Records	313-2282 or 313-2356
CITY's in COUNTY - (see pages 4 - 10)	*****
CITY OF MARTINEZ PUBLIC WORKS	372-3515
525 Henrietta Street, Martinez	
CITY OFFICES (see page 4 - 10)	
CLAIMS	
- Against County, Risk Management, Liability Unit	335-1440
CLEAN FILL (See Dirt)	
CLEAN UP PROGRAMS FOR RESIDENCES	
- ENVIRONMENTAL HEALTH	692-2500
CLEAN WATER PROGRAM	1-800-NO DUMPING 313-2360
CLEARANCE FOR UTILITIES BEFORE SUB BASE	
Public Works	
- Construction	313-2320
CLERK OF THE BOARD OF SUPERVISORS	335-1900
CLERK RECORDER'S OFFICE	335-7900
CLIMATE ZONE	
Department of Conservation & Development	
- Building Inspection	674-7200
CLOSING A LANE	
- Application and Permit Center, Bob Hendry	674-7744

C

CODE ENFORCEMENT

Department of Conservation & Development

- Building Inspection 674-7210
- CCC Fire District 941-3300

COLLISION REPORTS (from CHP)

Public Works

- Traffic 313-2187

COMMERCIAL BUILDINGS

674-7200

COMMERCIAL PROPERTY RECORDS (County Property)

Public Works

- Capital Projects 313-2102

COMMISSION CHECKS FOR PAY PHONES

Public Works

- Accounting, Wanda Quever 313-2372

COMMUNITY DEVELOPMENT

674-7200

COMMUNITY CENTERS:

Location	Director	Phone Number
MonTara Bay Community Center 2250 Tara Hills Drive San Pablo, CA 94806	Center is open Mondays only	(510) 724-1434
Rodeo Recreation Center Lefty Gomez Ballfield Complex 470 Parker Avenue Rodeo, CA 94572	Margrit Haaf Center is open Tues., Wed., & Thurs. only	(510) 799-7592 (510) 374-3978 Fax

COMPACTION TEST

- General, M&T Lab 646-2120
- If contractor phones, Construction 313-2320

COMPLAINTS

- Property Damage: Risk Management 335-1455
- County Car: Public Works, Fleet Management Svcs 313-7071

C

COMPUTER SUPPORT

- Department of Conservation & Development
- Tech Support 674-7253
- Public Works
- Information Technology, Mark Wharton 313-2243

COMPLIANCE CHECK LIST FOR SUBDIVISIONS

- Public Works Engineering Services Counter staff 313-2000

COMPOST BINS

- Department of Conservation & Development
- Community Development 674-7203

CONCEALED WEAPONS

- Sheriff's Office 335-1500

CONDEMNATION AGREEMENT

- See Right Of Way Acquisition Agreement *****

CONDITIONS OF APPROVAL

- Approved Project
- Public Works
- Engineering Services, Counter staff 313-2000
- Department of Conservation & Development
- Community Development 674-7205
- Pending Project
- Department of Conservation & Development
- Community Development 674-7205
- Public Works
- Engineering Services 313-2315

CONES/WOOD BARRICADES

- Public can purchase/rent from traffic device companies *****



CONFLICT RESOLUTIONS PANEL

- Central County 798-6132
- East County 754-3729
- West County (510) 234-5010

CONSTRUCTION INSPECTION

Department of Conservation & Development

Building Inspection

- Inspection 674-7204

- Fee estimates 674-7200

Public Works

- Construction 313-2320

- Fee estimates, Eng. Serv., Counter staff 313-2000

CONSTRUCTION INSPECTION FEE ESTIMATES

Public Works

- Engineering Services Counter staff 313-2000

CONSUMER AFFAIRS, Department of (800) 952-5210

CONTRA COSTA ASSOCIATION OF REALTORS 295-9200

CONTRA COSTA CENTRE

Department of Conservation and Development

- Redevelopment 674-7208

CONTRA COSTA COUNTY PUBLIC WORKS, Information 313-2000

- Website: www.cccpublicworks.org

C. C. REGIONAL PERMIT ASSISTANCE CENTER 229-5950

CONTRA COSTA TRANSPORTATION AUTHORITY 256-4700
Fax 256-4701

CONTRACTORS' LICENSE NUMBERS

- State (800) 321-2752

C

CONTRACTS (Construction)

Public Works

- DBE Compliance 313-2249

- DBE Engineering Aspects
Construction 313-2233 or 313-2330

CONTRACTS (Outside Vendors)

Public Works

-Purchasing, Barbara Hodges 313-2157

CO-OPERATIVE EXTENSION (See Master Gardner) 925/646-6540

COPY OF PLANS

Department of Conservation and Development

- Building Inspection Records 674-7213
or 335-1179

COPY ORDINANCES

-Clerk of the Board 335-1900

CORNER RECORDS CHECKLIST

Public Works

- Records 313-2282

- Surveys 313-2314

CORRIDOR STUDY

- East Co. Delta Expressway 313-2275

Department of Conservation and Development

- Community Development 674-7833

Highway 4, Commuter Way, Rail Studies

Public Works

- Transportation Engineering 313-2275

COTTAGE FOOD

Environmental Health 692-2500

COUNTY ADMINISTRATOR, David Twa 335-1086

COUNTY CONNECTION 676-7500

C

COUNTY COUNSEL 335-1800

COUNTY ORDINANCES

County Counsel 335-1800

Title 8 & 9

Department of Conservation and Development

- Community Development 674-7200

- Building Inspection 646-4108

Title 9 & 10

- Public Works Flood Control Counter staff 313-2000

To purchase a copy

- Public Works Reception 313-2000

Floodplain Management 313-2348

Unincorporated

Public Works Clean Water Program 313-2000

COUNTY PARKS (See Parks & Recreation)

COUNTY PLANNING COMMISSION

-Secretary - Hiliana Li 674-7792

COUNTY PROPERTY FOR SALE

Public Works

- Real Estate 313-2220

COUNTY ROAD (WHOSE IS IT?)

- Public Works Records 313-2282 or 313-2356

COUNTY VEHICLE COMPLAINTS/ INFORMATION

Public Works

- Fleet Services 313-7074

CONVENCE, CONDITIONS & RESTRICTIONS (See CC&R's)

COWELL RANCH (STATE OWNED PARK)

C

CREEKS/FLOOD CONTROL

- Public Works Maintenance 313-7000
- Setbacks for Creeks - Flood Control Counter staff 313-2000

CROSSING GUARDS

- Public Works
- Transportation Engineering
 - Mark de la O (For Bay Point Only) 313-2234
- Other cities, appropriate school *****

CROSSWALK SIGNAL REPAIR

- Public Works
- Facilities Maintenance 313-7052

CULVERTS (a drain that crosses a road)

- Collapsed or damaged, adjacent property owner *****
- Permits, Application & Permit Center, Bob Hendry 674-7744
- Const. Inspection, (See Construction Inspectors)
- Cleaning of driveway culverts that carry water
 - from roadside ditches, Public Works Maintenance 313-7000

CULVERTS & ROADS

- County maintained
- Public Works Maintenance 313-7000

CURB AND GUTTER

- In front of residence, property owner *****
- For installation or repair,
 - Permit Center, Bob Hendry 674-7744
- Construction Inspection,
 - See Construction Inspectors *****
- Along thoroughfares with no driveway access
 - from adjacent property, Public Works Maintenance 313-7000

C

CURB

- Address painted
Application & Permit Center, Bob Hendry 674-7744
- Handicapped Curbs (to have one painted)
Public Works Traffic 313-2258
- Painted, Public Works Traffic 313-2258
- Property line distance,
Public Works, Records 313-2282 or 313-2356

CURB GRADE DRAWINGS/INFORMATION

- Public Works, Records 313-2282 or 313-2356

CUSTODIAL SERVICES (County Buildings)

- Public Works 313-7096 or 313-7052

CUTTING (ROADSIDE OR WITHIN RIGHT OF WAY)

- Application & Permit Center, Bob Hendry 674-7744

CYCLONE FENCING (ONLY around FC Channels)

- Public Works Maintenance 313-7000

D

DAILY WORK SCHEDULE (CALL IN SHEETS FOR MAINTENANCE CREWS)	
- Public Works Maintenance	313-7000
DAMS	
- EBMUD San Pablo Reservoir, Briones Reservoir	(510) 835-3000
- Public Works Maintenance Pine Creek Detention Basin, Little Pine, Marsh Creek, Deer Creek and Dry Creek Dams	313-7000
- Contra Costa Water District Los Vaqueros	688-8000
DATA PROCESSING OPERATIONS	
- LIS trouble - DOIT help desk	313-1250
DAY CARE CENTER	
- Kids At Work	313-2380
DBE (See Contracts)	
DEAD ANIMALS ON STREET	
- Animal Control, Martinez	335-8300
- Animal Control, Pinole	(510) 374-3966
DEATH CERTIFICATES	
- Clerk/Recorder's Office, 555 Escobar Street, Martinez	335-7900
DEBRIS ON COUNTY ROADWAY, Large items	
- Public Works Maintenance	313-7000
DEDICATION OF ROADS, Already filed	
- Public Works Records	313-2282 or 313-2356

D

DEDICATION, OFFER OF	
- Processing, Public Works Engineering Services, Counter Person	313-2000
- Proposed, Public Works Engineering Services	313-2315
DEED OF TRUST	
- Housing	674-7884
DEEDED PROPERTY	
- Recorder's Office	335-7900
- Public Works Real Estate	313-2229
- Department of Conservation and Development Community Development (Housing)	674-7207
DEEDS	
-Clerk Recorder	335-7900
DEFERRED COMPENSATION (THE HARTFORD)	(888) 528-9009
DEFERRED IMPROVEMENT AGREEMENT	
Public Works - Engineering Services, Counter staff	313-2000
DEFERRED IMPROVEMENT AGREEMENT COPY	
- Recorders	335-7900
DELTA ADVISORY PLANNING COMMISSION	
Department of Conservation and Development -Community Development, John Greitzer	674-7824
DELTA COVES	
Department of Conservation and Development - Community Development, Ruben Hernandez	674-7785

D

DELTA FERRY AUTHORITY	
- Wetlands, Dave Forkel	283-4216
- Ralph Herringer (operations)	(916) 777-6091
DELTA EXPRESSWAY (SR4 Bypass)	
Public Works	
- Transportation Engineering	313-2275
- Payments/checks, Finance	313-2232
DEMOGRAPHICS (County)	
Department of Conservation and Development	
- Community Development	674-7200
DEMOLITION PERMITS	
Application and Permit Center	674-7200
Department of Conservation and Development	
- Community Development	674-7200
- Building Inspection	674-7200
- Redevelopment	674-7208
DEPARTMENT OF CONSERVATION & DEVELOPMENT	674-7200
DETENTION BASIN	
Public Works	
- Flood Control, Counter person	313-2000
DEVELOPMENT	
Department of Conservation and Development	
- Community Development, Current Planning	674-7205
Public Works	
- Road & Drainage requirements,	
- Engineering Services	313-2315
DEVELOPMENT SERVICES - Appointment for East & West Counties	
Department of Conservation and Development	
- Community Development	
Jade Murray	674-7789

D

DIMENSIONS OF LOT

- Department of Conservation and Development
- Community Development, Current Planning 674-7200

DIRT, CLEAN FILL

- Public Works
- Maintenance 313-7000

DIRT, Excess Landfill

- Public Works
- Maintenance yards in vicinity may need fill 313-7000
Call for referral to local facilities (800) 750-4096

DISABILITIES ACT

- Pacific Disability & Business Assistance Center (800) 949-4232
- Website, www.adapacific.org

DISAVANTAGED BUSINESS UTILIZATION

- Public Works
- Pre-bid, Design 313-2230
- Administration 313-2249
- After Bid, Construction 313-2330

DISEASED TREES

- Public Works
- Maintenance (on County property or on roadway) 313-7000
Department of Conservation and Development
- Community Development (Private property) 674-7200

DISPOSAL - See DUMP SITES

DISPUTE RESOLUTIONS PANEL of Contra Costa County

- Central County (925) 798-6132
- East County (925) 754-3729
- West County (510) 234-5010
-

D

DISTANCE (Curb to Property Line)	
Public Works	
- Records	313-2282 or 313-2356
DOCKS	
Application and Permit Center	674-7200
DOG LICENSE	
- Animal Services	646-2958
- City of Antioch (Antioch Residents only)	779-6989
DOMESTIC PARTNERSHIP	
- Recorder's Office	335-7900
DRAINS (Find out where located on sub. map/new dev.)	
Public Works	
- Engineering Services Counter staff	313-2000
DRAINAGE ASSESSMENT	
Public Works	
- Flood Control Counter staff	313-2000
DRAINAGE DITCHES (Being constructed)	
See Construction Inspection	*****
DRAINAGE DITCHES CLOGGED	
- Drainage Complaints in general	
Public Works, Maintenance	313-7000
DRAINAGE FEES	
Public Works	
- Finance	313-2073
DRAINAGE INSPECTION	
Public Works	
- New facility under construction, Construction	313-2320
- Existing, Maintenance	313-7000

D

DRAINAGE ORDINANCES, Title 10

Public Works

- Engineering Services Counter staff (Permits) 313-2000
- Flood Control Counter staff (Enforces) 313-2000

DRAW BRIDGES

- Army Corps of Engineers, Sacramento (916) 557-5100
- Army Corps of Engineers, San Francisco (415) 977-8618

DRAWINGS

Public Works

- Road Construction, Records 313-2282 or 313-2356

DRILLING OF WELLS

- Environmental Health 692-2500

DRIVEWAY INSPECTIONS

- See Construction Inspectors *****

DRIVEWAY WIDENING, permit for

- Application & Permit Center, Bob Hendry 674-7744

DUMP DIRT

Department of Conservation and Development

- Building Inspection-Grading 674-7718

DUMP SITES (public)

- Acme Fill, 950 Waterbird Way, Martinez 228-6525
- West CC Landfill (foot of Parr, San Pablo) (510) 233-4330
- Keller Canyon Landfill, Bailey Road, Pittsburg 458-9800

Transfer Stations:

- Contra Costa Transfer & Recovery Station
951 Waterbird Way, Martinez 313-8900
- Contra Costa Waste Recycling Center
1300 Loveridge Road, Pittsburg 473-0180

D

DUMPING

Department of Conservation and Development

- Building Inspection

674-7840

DUMPING IN STORM DRAINS

Public Works

- Clean Water Program

(800) 663-8674 or 313-2360

DUMPING IN CITY AREAS

Public Works

- Clean Water (1-800-NO DUMPING)

(800) 663-8674/64

DUMPING IN COUNTY (Illegal)

Public Works

- Maintenance (Maintstar input/email to clerical)

313-7000

- Creek or Watershed

313-2236

In Progress,

1. Get license number or other ID

information of dumper for police report

2. Get name, address, phone # of witness

3. Call Sheriff dispatch

646-2441

4. Call Building Inspection

674-7840

DUMPING OFFICER (for ILLEGAL DUMPING)

CC Sheriff's Dept.

Officer Jimmy Lee

313-2643

DUMP OR LANDFILL

- Call for referral to local facilities

(800) 750-4096

E

EARTHQUAKE STUDIES ZONES

- Maps
 - Department of Conservation and Development
 - Community Development 674-7200
- United States Geological Survey (888) ASK-USGS
Website, www.usgs.gov (275-8747)
1-800-USA-MAPS (1-800-872-6277)
- Abandonment
 - Public Works
 - Real Estate 313-2220
- Property
 - Public Works
 - Flood Control Counter staff 313-2000

EASEMENTS/UTILITIES

- Public Works
 - Drainage, Records Counter staff 313-2000
 - Public Road, Records Counter staff 313-2000
 - Utilities, Utility Company's (Contact Utility Company)
- Recorder's Office
 - What type/who owns easement on property 335-7900
 - Application & Permit Center 674-7200
 - Restrictions - Bob Hendry 674-7744

EAST BAY MUNICIPAL DISTRICT (EBMUD) (866) 403-2683

EAST BAY REGIONAL PARK DISTRICT 1-888 EB PARKS
1-888-327-2757

ECONOMIC DEVELOPMENT

- Department of Conservation and Development
 - Bob Calkins 674-7877
 - Rich Seithel 674-7869

ELECTIONS - Clerk 335-7800

- 555 Escobar St., Martinez, CA 94553

E

ELECTRIC BILLS - COMPLAINTS

- Public Utilities Commission, SF or PG&E (local office)

ELECTRICAL PERMIT

Department of Conservation and Development

- Building Inspection 674-7200

ELECTRICAL PROBLEMS

Private Property

- PG&E (800) 743-5000
(800) 743-5002

County property/facilities

- Facilities Maintenance 313-7057

ELEVATION CERTIFICATE for FLOOD INSURANCE

- Application & Permit Center, Bob Hendry 674-7744

ELEVATION MAPS, TOPO & CURB

Public Works

- Records 313-2282

ELEVATORS

- County buildings

Public Works- Facilities Maintenance 313-7052

EMAIL ADDRESSES

Department of Conservation and Development

- Building Inspection - ([firstname\).\(lastname\)dcd.cccounty.us](mailto:(firstname).(lastname)dcd.cccounty.us))
- Community Development - ([firstname\).\(lastname\)dcd.cccounty.us](mailto:(firstname).(lastname)dcd.cccounty.us))
- Public Works - ([first initial & first 4 letters of last name\)pw.cccounty.us](mailto:(first initial & first 4 letters of last name)pw.cccounty.us))

EMERGENCY CALL BOXES

- County Roads, Public Works Traffic 313-2021
- Highways, MTC (510) 817-3202
- Emergency, Office of Emergency Services 646-4461

E

EMERGENCY (AFTER HOURS OR WEEKENDS)	
- Sheriff's Communication Center	
Non-emergency	646-2441
Emergency	911
EMERGENCY GENERATOR	
Department of Conservation and Development	
-Building Inspection	674-7200
EMERGENCY SERVICES, OFFICE of	646-4461
EMPLOYMENT INFO	
- Human Resources, Job Hot Line	335-1700
- More information	335-1701
EMPLOYMENT VERIFICATION	
- Public Works, HR Secretary	313-2340
ENCROACHMENT PERMITS	
Application & Permit Center, Bob Hendry	674-7744
ENCROACHMENT PERMITS (For Inspection)	
Public Works	
- Construction	313-2320
- Engineering Services Counter staff	313-2000
ENVIRONMENTAL ASSESSMENT	
(Wells, Septic, Horse Boarding, Barns, Cottage Food)	
Environmental Health	692-2500
2120 Diamond Boulevard, Suite 200	
Concord 94520	
ENVIRONMENTAL IMPACT REPORT	
Department of Conservation and Development	
- Community Development	674-7200
Public Works	
- Environmental Project	313-2311

E

ENVIRONMENTAL PROTECTION AGENCY	(415) 947-8000
- Website, www.calepa.ca.gov	
ENVIRONMENTAL REVIEW	
Public Project	
- Public Works, Environmental	313-2311
Private Project	
- Department of Conservation and Development Community Development	674-7200
- Public Works Engineering Services	313-2315
EOAC (Equal Opportunity Advisory Committee)	
Public Works - Admin HR Analyst	313-2107
EROSION CONTROL	
Department of Conservation and Development	
- Building Inspection, Grading	674-7718
EXCAVATE, PRIVATE PROPERTY	
Department of Conservation and Development	
- Building Inspection, Grading	674-7718
EXCAVATE, PUBLIC ROAD	
- Application & Permit Center, Bob Hendry	674-7744
EXPLOSIVES	
- Permit to use CCC Fire District	941-3300
EXTRA HEAVY LOAD PERMITS (Transportation Permits)	
- Application & Permit Center, Bob Hendry	674-7744

F

FACILITIES SERVICES (County)

- Public Works (6:30am to 5pm) 313-7052
 - o After hours (925) 930-3698

FEE SCHEDULE

Public Works

- Finance, Account Clerk 313-2339
- Engineering Services, Counter staff 313-2000
- Road Traffic Related
 - Transportation (AOB Fees) 313-2327
- Department of Conservation & Development 674-7200

F.E.M.A. (Federal Emergency Management Agency) 1-800-638-6620

Public Works

- Engineering Services 313-2351
- Floodplain Program 313-2315

FENCES

Application & Permit Center

- Community Development (Private Property) 674-7200
- Public Works, Bob Hendry (If in road right of way) 674-7744

Public Works

- County Maintained, Maintenance 313-7000
- Blocking Public Access Throughway, Maintenance 313-7000

FERRY - Bradford Island, Delta Wetlands 283-4216

FICTITIOUS NAME

- Clerk Records Office 335-7900

FILES/MAINTENANCE OF LAND

- Health Department 646-5137

FILL (Clean to give away)

- Public Works
 - Maintenance 313-7000

F

FILMING PERMITS

Application and Permit Center
-Bob Hendry 674-7744

FINAL INSPECTION (On a house)

Department of Conservation and Development
- Building Inspection 646-4108
- For subdivisions,
Public Works
-Flood Control
See Construction Inspectors *****
Construction 313-2006

FINAL MAP CHECKLIST

Public Works
- Records 313-2282
- Engineering Services Counter staff 313-2000

FIRE ALARMS (County Facilities)

Public Works
-Facilities Maintenance 313-7052
or 313-7107

FIRE DISTRICTS (See page 11)

FIRE HYDRANTS (Leaking)

- Water District in caller's area (See page 28)

FIREARM LICENSE

Department of Conservation and Development
-Community Development, Current Planning 674-7200

FIREWORKS

- Fire District 930-5500

FIRST TIME BUYER

Department of Conservation and Development 674-7885

F

FISH & GAME DEPT. (707) 944-5500

FISH & WILDLIFE COMMITTEE, County
Department of Conservation and Development 674-7203

FITTER SHOP (Plumbing for County property/buildings) 313-7061

FLEET SERVICES CENTER
- Vehicle Repair, Purchase, Disposal & GPS Mgmt. 313-7074

FLOOD
- Hazard Insurance Maps
Floodplain Management 646-1623
Flood Zone, Community Development 674-7200
- Yard Problems, Building Inspection Grading 674-7718
- Financial Relief Information, OES 646-4461

FLOODING (In unincorporated areas)
- Weekdays, Public Works Maintenance 313-7000
- After hours, Sheriff's Communication Center 646-2441

FLOOD INSURANCE
- Insurance Companies *****
- Dept. of Housing and Urban Dev. Federal Insurance
Admin. Flood Zone Information. (800) 638-6620

FLOODPLAIN
Public Works
- Engineering Services 313-2351 or 313-2315
- Floodplain Management Information 646-1623

FLOOD ZONE
Department of Conservation and Development
- Community Development 674-7200

F

FLOOD ZONE (continued)

Drainage Related

Public Works

- Flood Control Counter staff 313-2000

Insurance/FEMA Related

Public Works

- Floodplain management information 646-1623

- Engineering Services 313-2315 or 313-2351

LOMAR (Letters of Map Revisions)

Application & Permit Center

- Bob Hendry 674-7744

FLOOR PLANS

Department of Conservation and Development

- Building Inspection 674-7213

FORECLOSURES

- West County

Community Housing Develop. Corp., No. Richmond

(510) 412-9290

- Central County

Housing Rights, Inc.

(510) 548-8776 or

(800) 261-2298

- East County

Pacific Community Services, Inc.

(800) 914-6874

FORECLOSURE PROPERTIES

-Recorder's Office

335-7900

FORMULA FOR BOUNDARIES

-Application and Permit Center

674-7200

F

FOUNDATION REPAIR	
Department of Conservation and Development	
- Building Inspection	674-7200
FRANCHISE FEES, Pipeline	
Public Works	
- Administration, Carrie Ricci	313-2235
FREEWAY NOISE ABATEMENT & FENCING	
- Caltrans	(510) 286-5678
FREEWAY ON/OFF RAMPS	
- Caltrans	(510) 286-6171
FRONTAGE IMPROVEMENTS	
Public Works	
- Engineering Services Counter staff	313-2000
FRONTAGE IMPROVEMENTS REQUIREMENTS	
Public Works	
- Approved Project	
Engineering Services Counter staff	313-2000
- Pending Projects	
Engineering Services	313-2315
FRONTAGE IMPROVEMENTS BEING CONSTRUCTED	
- See Construction Inspectors	313-2320
- Public Works Construction	313-2009
FUTURE PLANS FOR ROADS	
Public Works	
- Transportation Engineering	313-2276
FUTURE DEVELOPMENT	
- Roads, Public Works	
Transportation Engineering	313-2276
- General Plan, Community Development	674-7200

G

GAMING TABLES Sheriffs Office (Records)	335-1570
GAS LEAKS -PG&E	*****
GAS WANTED, Subject To PW Clearance Department of Conservation and Development - Building Inspection	646-4108
GAS WELLS Department of Conservation and Development -Community Development	674-7200
GASOLINE INSPECTION - Environmental Health	692-2500
GARAGE - FLEET SERVICES (County Cars)	313-7074
GARBAGE - Complaints, unsanitary - Complaints (Private property) - Problem w/neighbors, Environmental Health - Collection Companies, (page 12) Public Works - Dumped on County road R/W, Maintenance - In abandoned cars, Maintenance	692-2500 335-1111 692-2500 313-7000 313-7000
GARBAGE (Trash) ENCLOSURE REGULATIONS Department of Conservation and Development - Code Enforcement Public Works - Clean Water Program	674-7203 313-2360
GARBAGE LIENS (UNPAID WASTE COLLECTION) Department of Conservation and Development -Community Development	674-7203

G

GARBAGE COMPANY COMPLAINTS (Phone/Mail) Department of Conservation and Development -Community Development	674-7203
GARBAGE EXEMPTIONS Department of Conservation and Development -Community Development	674-7203
GARDEN/MASTER GARDNER (See Cooperative Extension)	
GATE ACCESS Public Works - For through traffic, Fernando Valdez - Need Key, Maintenance	313-2323 313-7000
GENERAL PLAN Department of Conservation and Development	674-7200
GEOLOGICAL HAZARD ABATEMENT DISTRICTS (GHAD) (California Association of GHAD) Website: www.ghad.org	866-9000
GEOPHYSICAL SURVEY Department of Conservation and Development - Community Development	674-7200
GEOTECHNICAL REPORT Department of Conservation and Development - Community Development, Darwin Myers	209-9994
G.F.E. (Good Faith Effort Solicitation) Public Works - Larry Theis	313-2166
GHAD (see Geological Hazard Abatement Districts)	

G

GIS	
Public Works	
- Mapping, Barry Schamach	313-2185
- www.ccmmap.us/gis	
GRADING ON AN EXISTING ROAD	
Public Works	
- Maintenance	313-7000
GRADING	
Department of Conservation and Development	
- Building Inspection, Grading	674-7200
GRADING FEE SCHEDULE	
Department of Conservation and Development	
- Building Inspection	646-4108
Public Works	
- Engineering Services Counter staff	313-2000
GRADING PERMIT FEES	
Department of Conservation and Development	
- Building Inspection	674-7200
GRAFFITI HOTLINE	
Department of Conservation and Development	
- Building Inspection (Private Property)	674-7210
Public Works	
- Maintenance (County Property)	313-7000
- Facilities (County Buildings)	313-7052
- Creeks - Flood Control Counter person	313-2000
GRANT OF EASEMENT	
- To a person or individual, Title Company	*****
- Part of Subdivision,	
Public Works Engineering Services, Counter staff	313-2000
- Private Property	335-1111
GRANTS FOR REMODELING	
Department of Conservation and Development	
- Building Inspection	674-7207

G

GREEN WASTE EXEMPTION Department of Conservation and Development -Community Development, Lorna Thomson	674-7823
GROUNDS MAINTENANCE - For County buildings <u>only</u> Public Works - Facilities Maintenance	313-7052
GROUND WATER LEVEL Environmental Health	692-2500
GUARDRAIL Public Works - Maintenance	313-7000
GUTTERS (Roadside) Public Works - Maintenance - Public Installation, Transportation Engineering - Private Installation, Maintenance	313-7000 313-2276 313-7000

H

HABITAT FOR HUMANITY	
- Mt. Diablo Habitat for Humanity	228-0112
5702 March Dr., Suit T	
Pacheco 94553	
HAMMERHEAD TURN AROUND	
Public Works Engineering Services Counter staff	313-2000
HANDICAPPTED FUNDS FOR REMODELING	
Department of Conservation and Development	
-Community Development	674-7200
HANDICAPPED PARKING SPACE	
Department of Conservation and Development	
-Transportation	674-7209
Public Works	
-Transportation	313-2187
HARBOR MASTER (Martinez)	
- City of Martinez	372-3500
HARTFORD DEFERRED COMPENSATION	(888) 528-9009
HAZARDOUS MATERIALS/SUBSTANCE SPILLS	
- Hazardous Materials, Industrial	692-2500
	or 646-2286
- Office of Emergency Services, State Wide	228-5000
- Household Toxins	(800) 750-4096
HAZARDOUS WASTE PROGRAM	(800) 750-4096

H

HAZARDOUS WASTE COLLECTION FACILITY

West County Facility
101 Pittsburg Avenue
Richmond

(888) 412-9277

Central County Facility
4797 Imhoff Place
Martinez 94553

(800) 646-1431

East County Facility
2550 Pittsburg-Antioch Highway
Antioch

756-1990

HAZARDOUS WASTE TASK FORCE

Environmental Health
Office of Emergency Services

692-2500

646-4461

HEALTH SERVICES

957-5400

HEATING AND COOLING PROBLEMS (County Buildings)

Public Works
- Facilities Maintenance

313-7052

HEAVY EQUIPMENT HAULER (Transportation Permit)

- Application & Permit Center, Bob Hendry

674-7744

HIGHWAY 4 (See Caltrans)

HIGHWAY, Scenic

- Caltrans, Landscape Architecture

(510) 286-5924

HIGHWAY PATROL

- 5001 Blum Road, Martinez 94553

646-4980

HIGHWAY PLAN RIGHT OF WAY

Public Works
- Transportation Engineering

313-2276

H

HISTORICAL LANDMARK ADVISORY COMMITTEE Department of Conservation and Development -Community Development, Christine Louie	674-7787
HISTORICAL SOCIETY (CC COUNTY)	229-1042
HOME IMPROVEMENTS - Application & Permit Center	674-7200
HOME OCCUPATION (BUSINESS) Department of Conservation and Development -Community Development	674-7200
HOMELESS PROGRAMS	313-6736
HOMESTEAD PROPERTY - Recorder's Office	335-7900
HORSE BOARDING (See Environmental Assessments)	
HORSE CROSSING SIGN Public Works - New Sign - Traffic - Existing/Damaged - Maintenance	313-2258 313-7000
HOUSE- HISTORY - Previous Owners, Assessor's Office - When built, Assessor's Office Department of Conservation and Development - Building Permits (Building Inspector Records)	313-7400 313-7400 674-7213
HOUSE MOVES - Application & Permit Center, Bob Hendry Department of Conservation and Development - Building Inspection Public Works - Inspection - Construction	674-7744 674-7200 313-2320

H

HOUSE PLANS

Department of Conservation and Development
- Building Inspection

674-7213

HOUSE, Water Coming From Under

Department of Conservation and Development
- Building Inspection

646-2300

HOUSEHOLD HAZARDOUS WASTE PROGRAM

(800) 750-4096

HOUSING AUTHORITY of CC COUNTY

- 3133 Estudillo Street
- Martinez, CA 94553

(925) 957-8019

HOUSING FINANCE PROGRAM

335-7200

HUMAN RESOURCES DEPARTMENT

335-1770

HVAC PROBLEMS (County Buildings)

Public Works
-Facilities Maintenance

313-7052

HYDROLOGY

Public Works
- Flood Control, Mark Boucher

313-2274

I

ILLEGAL DUMPING	1-800-NO DUMPING 1-800-663-8674
Department of Conservation and Development	
- Building Inspection - Code Enforcement	674-7210
Public Works	
- Maintenance (unincorporated road/easements) (Give information to Maintenance Clerical)	313-7000
- Facilities Maintenance (County Property)	313-7052
- Clean Water Program	313-2360
ILLEGAL DUMPING OFCR	
Sheriff's Dept, Jimmy Lee	313-2643
ILLICIT DISCHARGE	
Public Works	313-2236
IMPACT FEES	
Public Works	
- Finance, Account Clerk	313-2339
IMPROVEMENT PLANS	
Public Works	
- Current, Engineering Services Counter staff	313-2000
- Old - On microfilm, Records	313-2282 or 313-2356
- Bonds - Engineering Services	313-2352
INCIDENT REPORT, from Airports	
- Administration - HR Analyst	313-2107
INDEMNITY WORK REPORT	
Public Works	
- Finance	313-2237
INFORMATION TECHNOLOGY, Dept. of (DOIT)	313-1200
INJURIES	
Public Works	
- Administration - HR Analyst	313-2107

I

INSPECTIONS

- Department of Conservation and Development
- Building Inspection, Buildings/houses 646-4108
- Public Works
- Sidewalks, driveways, subdivisions, roads in
Subdivision, drainage improvements under permit,
(See Construction Inspectors) *****
- Landscape/Irrigation/Parks, Special Districts 313-2181

INTERNATIONAL CONFERENCE OF BUILDING CODES

(562) 699-0541

IRRIGATION

- County Maintained Parks, parkway landscaping (landscaping within
County road right of way)
- Mainline pressure test
- Inspections
- Public Works, Special Districts 313-2272

IRONHORSE CORRIDOR MANAGER

- Public Works
- Engineering Services staff 313-2213

IRONHORSE TRAIL

- Public Works
- Real Estate staff 313-2220
- EBRPD (510) 544-3027
- Engineering Services staff 313-2213

J

JOHN MUIR HOUSE

- 4202 Alhambra Ave, Martinez

228-8860

JUVENILE HALL

957-2700

K

KEYS TO CHANNELS

- Flood Control gates, Public Works Maintenance 313-7000
- County owned/leased
Public Works
- Facilities Maintenance 313-7052

KEYS

- Public Works Buildings
- Facilities Services 313-7052
- Public Works Pool Vehicles
- Administration Secretary 313-2204

KNIGHTSEN WATER DISTRICT

- Operation & Maintenance (Ironhouse Sanitary) 625-2279
- Public Works
- Billing - Finance 313-2232

L

LAFCO	
Local Agency Formation Commission	335-1094
Department of Conservation and Development	
-Rich Seithel, Chief Annexations & Economic Stimulus Program	674-7869
LAN (Local Area Network)	
- Public Works - Information Technology Mark Wharton	313-2243
LAND DEVELOPMENT TIMEKEEPING	
- Public Works - Finance	313-2350
LAND USE PERMIT	
- To apply or amend, Community Development	674-7200
- Road & Drainage Requirements Public Works Engineering Services	313-2370
LANDFILL SITES & TRANSFER RECYCLING HOTLINE	
Department of Conservation and Development	
- Community Development (Also see DUMP SITES for locations...)	674-7203
LANDLORD/TENANT DISPUTES	800-261-2298
LANDSCAPING (Lighting - See Streetlights)	
Public Works	
- Special Districts	313-2272
- Irrigation	313-2272
LANDSCAPE STANDARDS (see Public Works website)	

L

LANDSLIDES	
Private property	
Department of Conservation and Development	
- Building Inspection	674-7200
Blocking Road	
Public Works	
- Maintenance	313-7000
LAND SURVEY MAPS	
Public Works	
- Records	313-2282 or 313-2356
LATITUDE & LONGITUDE	
Public Works	
- Records	313-2282 or 313-2356
LEACH FIELDS	
-Environmental Health	692-2500
LEACH FIELDS	
- Environmental Health	682-2500
LEASE MANAGEMENT	
Public Works	
- Real Estate	313-2130
LEASE PURCHASE'S	
Public Works	
-Purchasing	313-2151
LEGAL DESCRIPTION OF LAND	
- Clerk Recorder	335-7900
- County land	
Public Works, Surveys	313-2343
LEVEE REPAIR	
- Refer to respective Reclamation District	*****
- Walnut Creek, Grayson Creek and Marsh Creek	
Public Works Maintenance	313-7000

L

LIABILITY CLAIMS	
- Risk Management	
2530 Arnold Dr., Martinez	335-1440
LIBRARY (See Page 14)	
LICENSING OF RESIDENTIAL CARE FACILITIES	
-State Health Department	229-5950
LIENS FILED	
Public Works	
-Finance staff	313-2237
LIEN NOTICES	
Public Works	
- Finance	313-2372
Recorder's Office	
- Lien to be filed	335-7900
LIGHTS (Also see Parking Lot Lights)	
Public Works	
-Street light out, Special Districts	313-2286
-Signal light not working, Signal Shop	313-7036
- County Buildings, Facilities Maintenance	313-7052
LIGHTING ANNEXATION FEES	
Public Works	
- Special Districts	313-2286
LIGHTING ASSESSMENT DISTRICT	
Public Works	
- Special Districts	313-2286
LIS (LAND INFORMATION SYSTEM)	
Department of Conservation and Development	674-7253
Public Works - Information Technology	313-2261

L

LITTER CONTROL	
Southern Pacific Right of Way	
Weed Abatement/Short Term Permit Use	
- Public Works	
Real Estate	313-2220
LITTER CONTROL (County Property)	
Public Works	
- Facilities Maintenance	313-7052
- Ground Services	313-7082
LIQUEFACTION STUDY	
Department of Conservation and Development	674-7200
LIQUOR LICENSE	(510) 639-0628
LIVORNA PARK	
Public Works	
- Special Districts staff	313-2272
LONGITUDE & LATITUDE LOCATIONS	
Public Works	
- Records	313-2282 or 313-2356
LOCAL 1, Union	228-1600
LOS VAQUEROS DAM	
- CC Water District	516-3200
LOST AND FOUND	
Public Works	
- Receptionist	313-2000
LOT LINE ADJUSTMENT	
Department of Conservation and Development	
- Community Development	674-7200
LOT MAPS (See Parcel Maps)	

L

LOT SIZE MINIMUM

Department of Conservation and Development
- Community Development

674-7200

LOT SPLIT/DIVISION

Department of Conservation and Development
- Community Development
Public Works
- Engineering Services

674-7200

313-2315

L.S.M. MAPS

Public Works
- Records

313-2282 or 313-2356



MADDY BOOKS	
- Clerk of the Board	335-1209
MAIL BOX PERMITS	
- Application & Permit Center Bob Hendry	674-7744
MAINLINE IRRIGATION	
Public Works	
-County maintained Parks, Landscape areas (Parkways) within County Road right of way Engineering Services Counter staff	313-2000
- Special Districts	313-2181
MANHOLE COVERS	
Public Works	
- Maintenance does storm drain covers	313-7000
- Survey covers, Surveys	313-2343
Sanitation District or Water District in caller's area	*****
Under valve covers, telephone vault covers, appropriate utility company	*****
MAPS	
Public Works	
- Boundaries, Copies of Maps, Showing Showing street addresses in County, Records	313-2282
- Plot Maps, Public Works Records counter staff	313-2000
-SR4 Bypass Nancy Wein	313-2275
or Bart Littell	(925) 756-2382
Elections	335-7800
For sewers (See Sanitary District Page 19-23 for that area)	
Department of Conservation and Development	
- Community Development Zoning, general plan land use, urban limit line	674-7200



MAP CHECKS

Public Works

- Corner Records, Surveys, Allen Ruyters 313-2349
- Final Map, Surveys, Allen Ruyters 313-2349
- Parcel Map, Surveys, Allen Ruyters 313-2349
- Record of Survey, Surveys, Allen Ruyters 313-2349

MAP REVIEW

Public Works

- Parcel Maps, final maps, record of survey
Survey 313-2349 or 313-2343

MARRIAGE CERTIFICATES/LICENSES

- Recorder's Office 335-7900

MARTINEZ POLICE DEPARTMENT (Non-emergency) 372-3400

MASTER GARDNER (See Cooperative Extension) 646-6540

MATERIALS MANAGEMENT (County Materials)

Public Works

- Supervisor 313-7077

MECHANICAL PERMITS

- Application & Permit Center 674-7200

MEDFLY TRAPS

- Agriculture 646-5250

MEDICATION DISPOSAL

- Environmental Health 692-2500

MERCURY MINES

Public Works

- Flood Control, Paul Detjens 313-2394



MERIT BOARD	
- Human Resources	335-1790
METRIC QUESTIONS	
Public Works	
- Engineering Services Counter staff	313-2000
MILES OF COUNTY ROAD	
Public Works	
- Records	313-2282 or 313-2356
MOBILE HOMES	
- Approval to place on Private Property Application and Permit Center	674-7843
MOBILE HOMES (Continued)	
- Codes & Park Information Department of Conservation and Development Building Inspection	674-7843
- Licensing, California Housing/Comm Development	(916) 255-2501
- Permit to Move on Highway Application and Permit Center, Bob Hendry	674-7744
-Titling California State Housing	(916) 255-2501
MOBILE HOME PARKS	
State of California	(800) 952-5275
MOLD	
See Landlord/Tenant or call	800-261-2298
MONTALVIN MANOR	
Department of Conservation & Development	
- Gabriel Lemus	674-7882
Public Works	
- Special Districts	313-2272



MONTARA BAY COMMUNITY CENTER	(510) 724-1434
Public Works	
- Special District staff	313-2272
MONUMENTS/ROAD MARKERS	
Public Works	
- Location, etc.	
Records	313-2282 or 313-2356
- Monument lids missing or damaged,	
Maintenance	313-7000
MORTGAGE CREDIT CERTIFICATE (MCC)	
Department of Conservation & Development	674-7208
MOSQUITO ABATEMENT	
- Vector Control	
1330 Concord Avenue, Concord 94520	685-9301
MOTION PICTURE (See Filming)	
MOUNT DIABLO STATE PARK	(925) 837-2525
96 Mitchell Canyon Road, Clayton 94517	
MUD SLIDES	
- When a County maintained road, creek,	
or FC channel is involved, PW Maintenance	313-7000
- Private Property,	
Department of Conservation & Development	
- Building Inspection - Grading	674-7718
MULCH	
Public Works	
- Facilities Maintenance	313-7052

N

NAME CHANGE	
- Clerk Recorder	335-7900
NEGATIVE DECLARATION	
- Private Development, Community Development	674-7205
- Public Works Projects, Environmental	313-2311
NEIGHBORHOOD PRESERVATION	
Department of Conservation and Development	
-Building Inspection	674-7207
NEW CITIES FROM UNICORPORATED	
-LAFCO	646-4090
NOISE COMPLAINTS	
- Sheriff	646-2441
NOISE ORDINANCE	
Department of Conservation and Development	
- Community Development	674-7200
NOTICE OF COMPLETION	
- Recorders	335-7900
NOTICE OF SEPARATION	
Public Works	
- Administration HR Secretary	313-2340
NPDES (National Pollutant Discharge Elimination System)	
Public Works	
- Flood Control	313-2296



OFFICE OF EMERGENCY SERVICES	646-4461
OIL SPILLS ON STREET / ROADWAY	
Public Works	
- Maintenance	313-7000
Environmental Health	692-2500
Hazmat	646-2286
OIL WELLS	
- Application and Permit Center	335-1360
ON/OFF RAMPS	
- Caltrans	(510) 286-6171 or (415) 330-6500
ORANGE ROAD CONES	
Public Works	
- Maintenance	313-7000
ORDINANCES, County	
- County Counsel	335-1800
- Clerk of the Board	335-1900
- Floodplain Management	313-2348
- Sale of title 8, Application & Permit Center	674-7200
- Sale of title 9 & 10, Public Works Reception	313-2000
OUTREACH PROGRAM	
Public Works	
- Michelle Parella	313-2249
OVERLOAD PERMIT (TRANSPORATION PERMIT)	
- Application & Permit Center, Bob Hendry	674-7744

P

PACIFIC, GAS and ELECTRIC

- Information 800-743-5002
- List of gas and electric facilities 800-743-5000
- Street lights, Public Works Special Districts 313-2286

PAINT DISPOSAL

- Sanitation District (See page 19 - 23)

PAINTING COUNTY BUILDINGS

- Public Works
 - Facilities Maintenance 313-7052

PAINTING CURBS

- Public Works
 - No parking sign - Traffic 313-2187

PAINTING, ROAD MARKERS

- Public Works
 - County roads, Maintenance 313-7000

PARADE PERMITS

- Application & Permit Center
 - Bob Hendry 674-7744

PARCEL MAPS (Four or less lots for info and copies)

- Public Works
 - Records 313-2282 or 313-2356
 - Survey 313-2343

PARCEL NUMBERS

- Assessor 313-7400

PARK DEDICATION FEES

- CDBG 674-7200
- Public Works
 - Old records of Survey 313-2343

PARK INFORMATION	
-EBRPD	510-635-0135
PARK PERMITS	
Public Works	
- Special Districts	313-2170
PARKING LOT LIGHTS (County Property)	
Public Works	
- Facilities Maintenance	313-7052
PARKING QUESTIONS	
Public Works	
- Handicap Parking	
Traffic	313-2187
- No parking zones	
Traffic	313-2187
- Permits	
Transportation Engineering	313-2349
Department of Conservation and Development	
- Community Development	
Requirements for development	674-7200
Off street parking	674-7200
PARKING RESTRICTIONS	
Public Works	
- Transportation	313-2187
PARKS AND RECREATION (Also see Page 15)	
- County Parks	
Public Works	
- Special Districts	313-2296 / 2170
- Facilities Services	Business Hours 313-7052
	After Hours 977-4316
- East Bay Regional Parks (EBRP), Oakland	(510) 562-7275
- Mt. Diablo State Park	927-7222
- Obtain User Permit, (See Park Permits)	

PARKS (Maintained by) (See page 15)

PASSPORTS

- Recorder's Office 335-7900
- Local Post Office *****

PAYROLL

- Public Works
- Payroll Clerk 313-2106 or 313-2246
- Auditor/Controller 646-1852

PERCOLATION TEST (Perc Test)

- Inspection of/List of well drillers to do test
Environmental Health 692-2500

PERFORMANCE & PAYMENT BOND

- Public Works
- Subdivisions,
Engineering Services Counter staff 313-2000
- PW and FC Contracts, Construction 313-2330

PERMITS

- Inspection of Encroachment Permits
- Public Works
- Construction (See Construction Inspector)
- Electrical and mechanical
- Department of Conservation and Development
- Building Inspection 646-4108 or 674-7200
- Encroachment
- Application & Permit Center, Bob Hendry 674-7744
- Public Works
- Engineering Services
- Ken Dahl 313-2351
- Lori Leontini or 313-2352
- Overweight on County Road
- Application & Permit Center, Bob Hendry 674-7744
- Use permits (See Land Use Permits)

P

PERMITS & FEES FOR STORM DRAINS & CHANNELS	
- Application & Permit Center, Bob Hendry	674-7744
PERSONNEL DEPARTMENT (Human Resources)	335-1770
PERSONNEL RECORDS	
Public Works	
- Administrative Services HR	
Secretary	313-2340
Payroll Clerk	313-2106 or 313-2249
PERSONNEL SAFETY	
Public Works	
- Administrative Services HR	313-2107
PESTS	
- Vector Control	685-9301
PESTICIDES (Spraying)	
- Roads, creeks, etc., Public Works Maintenance	313-7000
- Crop dusting, Agriculture	646-5250
PG&E	
- Information	(800) 743-5002
- List of gas and electric facilities	(800) 743-5000
- Street Lights, Public Works Special Districts	313-2286
- Permits, DCD - Building Inspection	674-7200
PINE CREEK DETENTION BASIN	
Public Works	
- Maintenance	313-7000
PIPE CONNECTIONS	
Department of Conservation and Development	
- Building Inspection	674-7200

P

PIPELINES

Public Works
- Real Estate 313-2227

PLAN CHECK

Department of Conservation and Development
- Status for active building permit applications
Building Inspection 674-7759
- Structure
Building Inspection 674-7204
Public Works
- Subdivision improvement & drainage plans,
Engineering Services Counter staff 313-2000

PLAN CHECK FEE

Public Works
- Engineering Services Counter staff 313-2000
Department of Conservation and Development
- Building Inspection 674-7204

PLAN HOLDERS LIST

- Public Works
www.cccounty.us/pwprojects *****
- Public Works Receptionists 313-2000

PLAN REVIEW (Roads and Drains)

Public Works
- Engineering Services Counter staff 313-2000

PLANNING

Department of Conservation and Development
- Community Development 674-7200

PLANS & SPECS FOR PUBLIC WORKS PROJECTS

Public Works
- To purchase, Blue Print Express (707) 745-3593
- To get copies after bid closes, Construction 313-2320

P

PLANS & SPECS for COUNTY BUILDINGS	
Public Works	
- Capital Projects, Architectural Division	313-7200
PLEASANT HILL BART (See Contra Costa Centre)	
PLOT MAPS	
Public Works	
-Records Counter staff	313-2000
PLUMBING PROBLEMS (County Buildings)	
Public Works	
-Facilities Maintenance	313-7052
PLUMBING PERMITS	
Department of Conservation and Development	
- Building Inspection	674-7200
POISION CONTROL	(800) 523-2222
POLICE - Martinez	372-3440
POLLUTION CONTROL, Air	
- Environmental Health	(415) 771-6000
POOL GARAGE	
Public Works	
- Fleet Services	313-7074
POOL VEHICLES	
Public Works	
-255 Glacier Drive, Linda Zimmerman	313-2204
-Fleet Services	313-7074

P

POOLS/SWIMMING (Inspection)	
Department of Conservation and Development	
- Building Inspection	674-7200
POPULATION OF CITIES	
Department of Conservation and Development	
-Community Development, Kristine Solseng	674-7809
POTENTIAL ILLICIT DISCHARGES	
Public Works	
- Clean Water Program	1-800-663-8674
POT HOLES	
Public Works	
- Maintenance	313-7000
PRECIPITATION RECORDS	
Public Works	
- Flood Control, Mark Boucher	313-2274
PRE-EMPLOYMENT PHYSICAL RESULTS	
- Employee Occupational Health Program	313-1100
PREVAILING WAGES/ RATES	
Public Works	
- Human Resources	313-2186
- Design/Construction	313-2330
- Capital Projects	313-2156
PRINT AND MAIL SERVICES	646-5521
Public Works (graphics@gsd.cccounty.us)	or 646-5522
- Graphic Design, Posters, Banners, Printing, Inserts	
Mail, Interoffice delivery, Document Center	
PRIVATE ROAD CHANGING TO COUNTY ROAD	
Public Works	
- Engineering Services Counter staff	313-2000

P

PROBATION DEPARTMENT	313-4000
PROCUREMENT CARDS	
Public Works	
- Purchasing, David Gould	313-2151
PROPERTY BUILDING RESTRICTIONS	
Department of Conservation and Development	
- Community Development	674-7200
PROPERTY, PRIVATE (Who Owns It?)	
- Assessor's office	313-7400
PROPERTY LINES	
Assessor's office	313-7400
Public Works	
- Records	313-2282 or 313-2356
PROPERTY, COUNTY (Being sold/bought)	
Public Works	
- Real Estate	313-2220
PROPERTY TAXES	
Treasurer-Tax Collector	957-5280
PROPERTY VALUATION	
Assessor	313-7600
PUBLIC ACCESS, THROUGHWAY, FENCE BLOCKING	
Public Works	
- Maintenance	313-7000
PUBLIC RECORDS REQUEST	
Public Works	
-Administration Secretary	313-2204

P

PUBLIC UTILITIES COMMISSION

-For PG&E complaints

(800) 649-7570
Or (415) 703-2782

PUBLIC WORKS DAYCARE

313-2380

PUMPS

- Avenida Martinez and SP Dam Rd.

Public Works Maintenance

313-7000

- North Richmond, WCC Sanitary Dist.

(510) 237-6603

PURCHASING (for County)

Public Works

- Purchasing Countywide

313-2120

- Procurement Services

313-2120



QUARRIES

Department of Conservation and Development
- Community Development

674-7200

QUIT CLAIM DEEDS

- Tax Collector
- To Record a deed
Recorder's Office

646-4122

335-7900

R

RADIUS CURVES

Public Works

-Engineering Services Counter staff 313-2000

RAILROAD ABANDONMENTS AND CROSSINGS

Public Works

- Transportation Engineering 313-2276
BNSF (Formerly AT&SF) (800) 832-5452

RAILROAD CROSSING

- Needs maintenance

BNSF (Formerly AT&SF) (800) 832-5452

- Emergency (Union Pacific Railroad) (800) 767-3884

RAINFALL INTENSITY

Public Works

- Flood Control, Mark Boucher 313-2274

RAINFALL RECORDS

Public Works

- Flood Control, Mark Boucher 313-2274

RATS

- Vector Control 685-9301

RAW SEWAGE

- Environmental Health 692-2500

REAL ESTATE SIGNS

Public Works

- On County Roads, Maintenance 313-7000

REAL ESTATE RECORDS

-Recorder's Office 335-7900

REAL ESTATE REPOSSESSION

Public Works

-Real Estate 313-2220

R

RECLAMATION DISTRICTS

- District 799, Hotchkiss Tract 684-2398
- District 800, Discovery Bay & Byron Tract 634-2351
- District 830, Jersey Island 625-2279
- District 2024, Palm Tract & Orwood Tract (209) 465-5883
- District 2025, Holland Tract (209) 943-5551
- District 2026, Webb Tract & Holland Tract 932-0251

RECLAMATION DISTRICTS (Continued)

- District 2065, Veale Tract (209) 465-5883
- District 2122, Winter Island 945-0234
- District 2130, Honker Bay 283-5576

RECORDING FEES

- Public Works, Surveys 313-2343

RECORD OF SURVEY

- Public Works
- To submit Corner Records, Surveys 313-2343 or 313-2028
- To submit to view existing, Records 313-2356
- Checklist - Records of Surveys 313-2282

RECORDS REQUEST

- Public Works
- Administration Secretary 313-2204

RECORDERS OFFICE

- 555 Escobar Street, Martinez 335-7900

RECREATION VEHICLES (RV's) Rules & Regulations

- Public Works
- Traffic 313-2187

R

RECYCLING CENTERS

- CC Recycling HOTLINE (local facilities) 674-7816
or 674-7211
- Public Works (County furniture/equipment only)
- Materials Management
Recycle Center, Johnson Adu Poku 646-4322
FAX 646-4036

REDEVELOPMENT AGENCY

- Department of Conservation and Development 674-7208
(N. Richmond, Rodeo, Bay Point, PH BART areas)

REFINERY INFORMATION (Emissions)

- Environmental Health/Health Services 692-2500
- BAAQMD (Bay Area Air Quality Mgmt District) (415) 749-4979
- Website: www.BAAQMD.gov

REHABILITATION FORM or PERMIT (Report)

- Department of Conservation and Development
- Building Inspection 674-7200

RENT CONTROL (Mobile Park)

- Department of Conservation and Development
- Building Inspection, Lou Reinhaller 674-7843

RENTAL CHECKS

- Public Works
- Real Estate Manager 313-2130

RESIDENTIAL REPAIR/TERMITE/FIRE

- Department of Conservation and Development
- Building Inspection 674-7200

RESTORATION OF SERVICE - GAS/ELECTRIC

- Department of Conservation and Development
- Building Inspection 674-7204

R

RESTRICTED ACCESS TO ROADS	
Public Works	
- Records	313-2282 or 313-2356
RETAINING WALLS, Part of Subdivision	
Application and Permit Center	
- If in public road right of way, Bob Hendry	674-7744
Public Works	
- Engineering Services Counter staff	313-2000
Department of Conservation and Development	
- Building Inspection	674-7200
RETENTION MONEY for ESCROW ACCOUNTS	
Public Works	
- Contract, Construction	313-2330
- Subdivision,	
Engineering Services Counter staff	313-2000
- Finance	313-2375
RETIREMENT (County)	646-5741
REZONING	
Department of Conservation and Development	
- Community Development	674-7200
REVOLVING CASH FUND, Petty Cash	
Public Works	
- Administration Secretary	313-2204
RIGHT OF WAY	
Public Works	
- Rights of entry,	
Engineering Services Counter staff	313-2000
- Surveys	313-2343
- Maps	
Records	313-2282 or 313-2356

R

RIGHT OF WAY AQUISION AGREEMENT (Condemnation Agreement) - To get one, Eng. Services, Counter staff	313-2000
RIGHT OF WAY ENGINEERING Public Works - Surveys	313-2343
RIGHT OF WAY MAPS Public Works - Records - Surveys	313-2282 or 313-2356 313-2343
RIGHT OF WAY, Southern Pacific Public Works Property Questions: - Real Estate staff - Transportation Engineering Maintenance Question: - Real Estate - Transportation Engineering - Maintenance Trail Question: - Transportation Engineering - East Bay Regional Park District	313-2229 313-2276 313-2229 313-2276 313-7047 313-2276 (888) 327-2757
RIGHT OF WAY WIDTHS Public Works - Records	313-2282 or 313-2356
RISK MANAGEMENT	335-1400/1456
ROAD CLOSURE PERMITS - Application & Permit Center, Bob Hendry	674-7744
ROAD COMMISSIONER Public Works Director - Brian Balbas	313-2202

R

ROAD CONES	
Public Works operations	
- Maintenance	313-7000
ROAD IMPACT FEES (AOB)	
Public Works	
- Finance	313-2350
- Transportation Engineering	313-2276
ROAD HISTORY/MILEAGE	
Public Works	
- Records	313-2282 or 313-2356
ROAD LOG	
Public Works	
- Work Being Done - Maintenance	313-7000
- County Roads - Records	313-2282
ROAD MAPS	
Public Works	
- Records	313-2282 or 313-2356
ROAD MARKERS (See Monuments)	
ROAD SPILLS	
- County Roads, Public Works Maintenance	313-7000
- Toxic, Environmental Health - Haz. Mat	692-2500
- Toxic/Freeway, Caltrans	926-6112
ROAD WIDTH	
Public Works	
- Engineering Services Counter staff	313-2000

R

ROADS

- Access Restriction
 - Public Works - Records 313-2282
- Citizen Accident's, Risk Management 335-1400
- Closure
 - Application & Permit Center, Bob Hendry 674-7744
- County or Not
 - Public Works Records 313-2356 or 313-2282
- Easement
 - Public Works - Records 313-2356 or 313-2282
- Future Plans
 - Public Works
- Transportation Engineering 313-2276
- Inspection for a subdivision,
 - See Construction Inspectors *****
- Naming New Roads
 - Department of Conservation and Development
 - Community Development 674-7200
- Permits
 - Application & Permit Center, Bob Hendry 674-7744
- Private Road Requirements,
 - PW Engineering Services Counter staff 313-2000
- Private requirements for county, acceptance
 - PW Engineering Services Counter staff 313-2000
- Public/Private
 - Public Works - Records 313-2282
- Reconstruction of a road,
 - Public Works - Transportation Engineering 313-2276
- Repairs
 - Public Works - Maintenance 313-7000
- Repaving in progress
 - Public Works - Construction 313-2320
- Repaving
 - Public Works - Maintenance 313-7000

R

ROADS (continued)

- Road Fees, Private Road Requirements,
PW Engineering Services 313-2315
- Road width
Engineering Services 313-2315
- Road with easement,
Public Works - Records 313-2282 or 313-2356
- Setbacks
Public Works - Records 313-2282
- Shoulders
Public Works - Maintenance 313-7000
- Temporary closure
Public Works - Maintenance 313-7000
Permits - APC, Bob Hendry 674-7744
- Toll Road
Transportation Engineering 313-2187 or 313-2276
- Weight Capacity
Application & Permit Center, Bob Hendry 674-7744
- Widening (future plans),
Transportation Engineering 313-2276

ROAD SPILLS

- County Roads
Public Works - Maintenance 313-7000
- Toxic
Environmental Health 692-2500
- Toxic - Freeway
Caltrans 926-6112

RODENT CONTROL

- Vector Control 685-9301

ROOF INSPECTION

- Department of Conservation and Development
- Building Inspection 646-4108

ROUTE 4

(See State Route 4 Bypass)

S

SAFE, Emergency Call Boxes	
- For County Roads, Public Works Traffic	313-2021
- For Highways, MTC	(510) 464-7700
SAFETY & BENEFITS	
Public Works	
- Administration HR	313-2107
SAFETY COORDINATOR PW	
Public Works	
- Administration HR	313-2107
SALES OF COUNTY LAND	
Public Works	
- Real Estate staff	313-2220
SAN PABLO DAM	
- East Bay Municipal Utility District	(510) 835-3000
SAND BAGS - (See page 16 & 20)	*****
SANITARY DISTRICTS (See pages 19 through 23)	
SBE	
Public Works	
- Administration	313-2249
- Purchasing Clerk	313-2157
SCHOOL BUS INSPECTIONS	(707) 648-4180
SECTION 8	
-Housing Authority	957-8011
Bruce Smargiasso	957-7090
SECURITY SYSTEMS (County Facilities)	
Public Works	
-Facilities Maintenance	313-7052 or 313-7107

S

SEISMIC ZONE, County	
Department of Conservation and Development	
- Application and Permit Center	674-7200
SELF-CERTIFICATION FORMS	
Public Works	
- Michelle Parella	313-2249
SEMINARS, TRAINING, & TRAVEL	
Public Works	
- Administration	
Office Manager	313-2280
SENIOR HOUSING	
Department of Conservation and Development	
- Kara Douglas	674-7880
SEPTIC TANKS	
- Environmental Health	692-2500
- Bethel Island - Ironhouse Sanitary District	625-2279
- Convert Septic to Sewer	
Central Sanitary District	229-7371
SERVICE AREAS (County)	
Public Works	
- Special Districts	313-2170
SET BACKS (Maps & Info)	
- Roads/Creeks	
Public Works	
- Flood Control Counter staff	313-2000
- Engineering Services Counter staff	313-2000
- Buildings	
Department of Conservation and Development	
- Building Inspection	646-4108 or 674-7200
- Proposed creek structure set back,	
Public Works	
- Engineering Services Counter staff	313-2000

S

- Private Property	
Department of Conservation and Development	
- Community Development	674-7200
- Requirements	
Department of Conservation and Development	
- Community Development, Planning	674-7200
SEWAGE BEING DUMPED IN CREEK	
- Office of Emergency Services, State Wide	646-4461
- Contra Costa County	
Environmental Health	692-2500
SEWER	
- Issues/Overflows	
CCC Sanitary District	933-0955
	(24 hrs) 933-0990
- Raw Sewage	
Environmental Health	692-2500
- Storm Drain clogged due to storm, PW Maintenance	313-7000
Except for some facilities in Crockett our	
storm drain systems are separate from	
Sanitary Sewer systems	
- See "Sanitary Districts" for:	
Inspection, Lateral, Fees, Hook Ups, Leak,	
Location on Property	
- Port Costa, Stonehurst	
Public Works - Special Districts	313-2170
SEWER PERMIT (Appropriate Sanitary District)	
SHERIFF DEPARTMENT	335-1500
SHERIFF CORONER DIVISON	313-2850
SHERIFF DISPATCH	646-2441
SHORT TERM USE PERMIT (SP R/W)	
- Weed Abatement, Litter Control,	

S

SHOULDERS (Road side)		
Public Works		
- Maintenance		313-7000
SIDEWALK (What can be placed on it)		
- Application & Permit Center, Bob Hendry		674-7744
SIDEWALK REPAIR		
- Fronting Property, Owner Is Responsible		*****
- Complaints		
Public Works - Maintenance		313-7000
SIDEWALKS		
Public Works		
- Clearance		
Engineering Services Counter staff		313-2000
-Dimensions		
Records Counter staff	313-2282 or 313-2356	
- Inspection (if new construction),		
See Construction Inspectors		*****
- New permits/Requirements		
Application & Permit Center, Bob Hendry		674-7744
SIDEWALKS (Continued)		
- Repair, (curb and gutter only)		
Maintenance		313-7000
SIESMIC MAPS		
Department of Conservation and Development		
- Community Development		674-7808
SIGNAL LIGHT PLACEMENT AND TIMING		
Public Works		
- Traffic		313-2187

S

SIGNAL LIGHT OUT (CCC and Pinole)

Public Works

- Signal Shop - Facilities Services 313-7052
- On Fridays, Emergencies Only 313-7052
- Damage/Lightout 313-7052
- Off ramps (highways), Caltrans (415) 330-6500

SIGNS, on County maintained roads

- New

Public Works - Traffic 313-2258

- Broken or missing

Public Works - Maintenance 313-7000

- Code Number for signs, guide signs, business church, etc.

Public Works

- Traffic 313-2258

- County Buildings (door signs)

Public Works

- Facilities Maintenance 313-7052

- Other than traffic

Department of Conservation and Development

- Community Development 674-7200

-No Trespassing

-Sign attached to signal light missing

Public Works - Sign Shop 313-7036

- Real Estate signs (picked up)

Public Works - Maintenance 313-7000

SINKHOLES

Public Works

- Maintenance 313-7000

SKUNKS

Animal Services (Contact with skunk) 335-8300

Vector Control (No contact with skunk) 685-9301

S

SLIDE INFORMATION

Department of Conservation and Development
- Building Inspection, Grading 674-7718

SLIDE ON PRIVATE LAND

Department of Conservation and Development
- Building Inspection, Grading 674-7718

SLIDE REPAIR DRAWINGS (limited amount of records available)

Public Works
- Records 313-2282 or 313-2356

SLIPPAGE FROM HILL

Department of Conservation and Development
- Building Inspection, Grading 674-7718

SMALL BUSINESS ENTERPRISE (SBE)

Public Works
- Administration 313-2249

SMALL BUSINESS GRANTS /INFORMATION

Department of Conservation and Development
- Bob Calkins 674-7877

SOIL, Slope stability

Department of Conservation and Development
- Building Inspection, Grading &
Community Development, Reports 674-7718 or 674-7200

SOIL TESTED ON PRIVATE PROPERTY

Department of Conservation and Development
- Building Inspection, Grading 674-7718 or 646-2300

SOIL TESTS

- Public Works and subdivision work
Public Works M&T Lab 335-3665

S

SOLAR (On County Property) Public Works -Facilities Maintenance	313-7052
SOLICITORS Public Works - Purchasing - https://purchasing.cccounty.us/bs/	313-2120
SOLICITING IN COUNTY (Obtain Permit) -Sheriff Department	335-1571
SOLID WASTE MANAGEMENT Department of Conservation and Development - Community Development	674-7203
SOUNDWALLS (Plans for existing walls) Public Works - Engineering Services Counter staff	313-2000
SOUTHERN PACIFIC Right Of Way Public Works - Real Estate Staff	313-2220
SPA Department of Conservation and Development -Building Inspection	674-7200
SPECIAL STUDIES ZONE - Application & Permit Center	674-7200
SPEED BUMPS Public Works - Traffic	313-2187
SPEED IN CERTAIN AREAS Public Works - Traffic	313-2323

S

SPIILLS

- In storm drain, channel or creek,
State Office of Emergency Services (800) 852-7550
- In creeks, Fish & Game (707) 944-2011
- Hazardous Substances
HAZMAT Program 692-2500
- In Roadway,

SPIILLS (Continued)

- California Highway Patrol 646-4980
- California Highway Patrol Emergency 646-4988
- Sheriff Dispatch 646-2441
- Public Works
- Maintenance 313-7000
- Environmental Health 692-2500

SPRINKLERS BROKEN (Medians, County Roadways, County Parks)

- Special Districts 313-2272
- Facilities Maintenance 313-7052
or 313-7082

STANDARD PLANS & STANDARD SPECIFICATION

- Public Works
- For sale, Receptionist 313-2000

STATE ROUTE 4 BYPASS

- Public Works
- Transportation, Nancy Wein 313-2275
- Site Questions, Maps
Nancy Wein (Historical information only) 313-2275
- Caltrans - Current Operational Issues (See Caltrans)

STOP SIGNS

- Public Works
- Missing or down - Maintenance 313-7038
or 313-7000
- New
Traffic 313-2258

S

STORM DRAIN EASEMENTS

Public Works

- County drainage easements,
Engineering Services Counter staff 313-2000
- Flood control easements,
Flood Control Counter staff 313-2000

STORM DRAINS

- Major creek and pipes
Public Works Flood Control Counter staff 313-2000
- Permits, Application & Permit Center 674-7200
- Repair/Clean, Maintenance 313-7000
- Maps of storm drains
Public Works Records (Unincorporated Subdivision) 313-2282
Engineering Services Counter staff (All other maps) 313-2000
Within City Limits (See City) ****
- Smaller pipe systems,
Public Works Engineering Services Counter staff 313-2000
- Under construction (see Construction Inspectors) *****

STORMWATER POLLUTION (NPDES) - County Wide

Public Works

- Clean Water Program, Secretary 313-2360
- Clean Water Program Manager 313-2392

STORMWATER POLLUTION (NPDES) - UNINCORPORATED

Public Works

- County Watershed Program 313-2296

STORM WATER UTILITY ASSESSMENT

Public Works

- Flood Control staff 313-2023

S

STREET

Public Works

- Final & 1-year inspection,
 See "Construction Inspectors" *****
- Gradient, Engineering Services Counter staff 313-2000
- Gutters, County maintained, Maintenance 313-7000
- Radius, Engineering Services Counter staff 313-2000
- Slopes, Engineering Services Counter staff 313-2000

STREET, Where Street Is Located

Public Works

- Records 313-2282 or 313-2356

STREET ADDRESS

Department of Conservation and Development

Community Development, Todd Fitzsimmons 674-7810

- Information
- New Name
- Name Change
- Numbering

Public Works

Traffic, Fernando Valdez
- Name Change 313-2323

STREET BOUNDARIES, How wide, etc.,

Public Works

- Records 313-2282 or 313-2356

STREET CUTS

Application & Permit Center, Bob Hendry 674-7744

S

STREET LIGHTS

- PG&E (800) 743-5000
- Have new installed
 - Public Works - Special Districts 313-2286
- If light is out in city, Call PG&E in area *****
- If light is out in unincorporated area of CCC,
 - Public Works - Special Districts 313-2286
- Numbering
 - Public Works - Special Districts 313-2286

STREET NAME CHANGE/NEW

- Department of Conservation and Development
 - Community Development (New name) 674-7809
 - Public Works (Change existing name)
 - Transportation Engineering, Monish Sen 313-2187
- STREET PAVING, New Development or Repair under Permits
- Public Works
 - Contractor, Construction 313-2320
 - County, Maintenance 313-7000

STREET RADIUS

- Public Works
- Records 313-2282

STREET SIGNS

- Public Works
- Stolen or missing, Maintenance 313-7000
- Installation of new signs, Traffic 313-2258

STREET SWEEPING

- Local Homeowners Association *****
- For Bay Point call Delta Diablo 778-4040
- Public Works
- Flood Control 313-2236

S

STREET WIDENING

Public Works

- Proposed

Transportation Engineering 313-2187

- Work in progress

Construction 313-2320

STRIPING ON ROADS

Public Works

- New, Traffic

313-2262

- Worn out, Maintenance

313-7000

STUDENT INTERN PROGRAM (Formerly Student Worker)

Public Works

- Administration Office Manager

313-2280

SUBDIVIDE

- Piece of property

Department of Conservation and Development

Community Development

674-7205

- Road & drainage requirements

Public Works

Engineering Services

313-2315

SUBDIVISIONS

- Road & drainage requirements, Pending Projects

Public Works

Engineering Services

313-2315

- Road & drainage requirements, approved project

Public Works

Engineering Services Counter staff

313-2000

- Improvement Plans

Public Works

Records

313-2282 or 313-2356

- Improvement Plan Review,

Public Works

Engineering Services Counter staff

313-2000

SUBDIVISIONS (Continued)

- Inspection for roads & drainage in subdivisions,
(See Construction Inspectors) *****
- Being built, complaints for homes
Department of Conservation and Development
Community Development 674-7200
- Maps
Public Works
Records 313-2282 or 313-2356
- New
Department of Conservation and Development
Community Development 674-7200
- Checklist
Public Works
Records 313-2282

SUBDIVISION BONDS

- Public Works
- Engineering Services Counter staff 313-2000

SUBPOENAS

- Department of Conservation and Development
- Building Inspection 674-7200
Direct to Building Inspection Records, 30 Muir Road, Martinez
- Community Development
Direct to 30 Muir Road, Martinez - Brenda Kain 674-7876
- Public Works
Direct to Administration Secretary 313-2204
If not available, call person served or
(1) Sign,
(2) Note date and time,
(3) Give to Administration secretary

SUMMARY OF PROCEEDINGS, Board of Supervisors

- Public Works
- Administration 313-2370

S

SUMMONS

- Clerk of the Board 335-1900

SUMP PUMPS

Department of Conservation and Development
- To install, Building Inspection 646-4108 or 674-7200

SURPLUS OFFICE EQUIPMENT (Disposal of)

Public Works
- Administration Secretary 313-2204

SURVEY MAPS

Public Works
- Records 313-2282 or 313-2356

SWIMMING POOLS

- Fences, permits, construction inspection
Department of Conservation and Development
Building Inspection 646-4108
or 674-7200

- New Construction & Insp.
Environmental Health 692-2500

- Commercial/Health violation
Environmental Health 692-2500

T

TAX ASSESSMENT	
Public Works	
- Special Districts	313-2286
TAX COLLECTOR	
- 625 Court Street, Martinez	957-2888
TAX EXEMPT NOTICES, Property	
Public Works	
- Real Estate, Lease Management	313-2229
TAX I.D	
Public Works	
- Finance	313-2122
TELECOMMUNICATIONS	313-7090
TELEPHONE BILLS	
Department of Information Technology	
- Telecommunications	313-7090
TELEPHONE REPAIR PROBLEMS	
Public Works	
- Information Technology	313-2347
TELEPHONE SERVICE REQUESTS	
Public Works	
- Information Technology	313-2347
TEMPERATURE IN THE BUILDING	
Public Works	
- Administration Reception Desk	313-2000
TENANT COMPLAINTS	
Housing Authority	951-8000
Department of Conservation and Development	
- Building Inspection	674-7210

T

TENANT/LANDLORD DISPUTES	800-261-2298
TERMITE REPAIR	
Department of Conservation and Development	
- Building Inspection	674-7200
TIRE DAMAGE (from county roads)	
Risk Management	335-1400
TITLE 8 & 9, Zoning Planning & Sub. Ord. Information	
Department of Conservation and Development	
- Community Development	674-7200
TITLE 9 & 10	
- To Purchase	
Public Works, Reception	313-2000
TOBACCO LAWS	313-6214
TOILETS/LOW WATER REBATE	
-Water Company	688-8320 / 688-8105
TOLL ROADS	
Public Works	
-Transportation Engineering	313-2187
TOPOGRAPHY (County)	
Public Works	
- Records	313-2282 or 313-2356
TOPOGRAPHICAL MAPS	
USGS	(800) 872-6277
Public Works	
- Records	313-2282 or 313-2356

T

TOWNSHIP PLANS & INFO

Public Works

- Records 313-2282 or 313-2356

TRACT NUMBER (New)

Department of Conservation and Development

- Community Development 674-7200

TRAFFIC BARRIERS

Public Works

- Maintenance 313-7000

TRAFFIC COUNTS/FLOWS (includes crosswalk signals)

Public Works

- Traffic 313-2349

- Impact Fees - Finance, Account Clerk 313-2339

TRAFFIC FEE SCHEDULE

Public Works

- Finance, Account Clerk 313-2339

TRAFFIC FLOW RATES

Public Works

- Traffic 313-2323

TRAFFIC SIGNALS

Public Works

- Order extra plans, Records 313-2282

- Timing, Traffic 313-2187

- Under Construction (See Construction Inspector)

- Facilities Maintenance, Sign Shop 313-7036

- Repair 313-7052

- City of Antioch, (Lonetree Only)

- Signal Shop 313-7052

- Cal Trans signals Business Hours (415) 330-6500

After Hours (510) 286-6359

Emergency 911

(CHP will respond & contact Cal Trans)

T

TRAFFIC STUDIES	
Department of Conservation and Development	
- Community Development	674-7858
TRAFFIC SURVEYS	
Public Works	
- Traffic	313-2323
TRAILS - East Bay Regional Park	(510) 635-0138
TRAINING, TRAVEL, SEMINARS	
Public Works	
- Administration	
Office Manager	313-2280
TRAINING COORDINATOR	
Public Works	
- Administration, Office Manager	313-2280
TRAINING REIMBURSEMENT	
Public Works	
- Finance	313-2376
TRANSIT DISTRICTS	
- School Bus Stops	
Public Works - Traffic	313-2187
- CCC Transit Authority,	
2477 Arnold Industrial Highway, Concord	676-1976
- Tri Delta - East County Area,	
801 Wilbur Avenue, Antioch 94509	754-6622
- WCC Transit Authority,	
601 Walter Ave., Pinole, 94564	(510) 724-3331
- BART/Bus Op. Customer Service	
800 Madison St., Oakland, 94604	(510) 464-7134
- Alameda CC Transit (AC Transit)	
1600 Franklin Street, Oakland	(510) 891-4777

T

TRANSPORTATION AUTHORITY (CCTA)	256-4700
- Fax number	256-4701
TRANSPORTATION FEES	
Public Works	
- Finance, Account Clerk	313 2073
TRANSPORTATION PERMIT	
Application & Permit Center	
- Bob Hendry	674-7744
Transportation Water & Infrastructure	674-7824
TRANSPORTATION PLANNING	
Department of Conservation and Development	674-7209
TRAVEL, TRAINING, SEMINARS	
Public Works	
- Administration	
Office Manager	313-2280
TREASURER-TAX COLLECTOR	957-5280
TREES	
Department of Conservation and Development	
- Community Development	
Ordinances	674-7200
Limitations, species, sizes, etc.	674-7200
TREE TRIMMING	
- Landscaped areas around County Buildings	
Public Works - Facilities Maintenance	646-4150
- Other areas along County roads, PW Maintenance	313-7000
- On private property, Property Owner	*****

T

TREE TO BE CUT DOWN

Department of Conservation and Development

- Community Development

Private Property, Planning Department

674-7200

- Application and Permit Center

Public Property, Bob Hendry

674-7744

TRENCHES

Public Works

- Road Maintenance

313-7000

- If Utility cuts across street,

Construction Inspector

313-2320

TUNNELS

- Caltrans

(510) 848-3482

U

UNDERGROUND SERVICE ALERT	1-800-642-2444
UNDERGROUND TANKS	
- HAZMAT	692-2500
UNION PACIFIC RAILROAD CROSSING	891-7862
	891-7864
- Emergency, (Downed gates, Hazards)	(800) 767-3884
UNIONS	
- Local 1	228-1600
- Local 512	228-4400
- Local 2100	(415) 864-2100
- Local 2700	228-4400
- Local 21	313-9102
- Western Council of Engineers	313-2188
UNEMPLOYMENT INSURANCE CLAIMS	
- Workers Comp only, Risk Management	335-1400
UPS - UNITED PARCEL SERVICE	
- Billing	(800) 742-5877
Public Works	
- Finance	313-2344
URBAN LIMIT LINE MAPS	
Department of Conservation and Development	
- Community Development	674-7810
USA- UNDERGROUND SERVICE ALERT	(800) 642-2444
- County	
Construction	313-2009
- Marking, gas lines, electrical	(800) 227-2600
USGS	(888) ASK-USGS
Website: www.usgs.gov	(275-8747)

U

USGS QUAD MAPS

Public Works

- Records Counter staff

313-2000

UTILITY CLEARANCE

Public Works

- Construction

313-2320

UTILITY UNDERGROUND REQUEST

Public Works

- Transportation Engineering

313-2276

V

VACATION/ABANDONMENT

Public Works

- Real Estate 313-2229

VAN POOLS

Department of Conservation and Development

- Community Development 674-7209

VARIANCE

Department of Conservation and Development

- Community Development 674-7200

VECTOR CONTROL

- Animal traps 685-9301

- Dead birds 1-877-968-2473

- Mosquitos (925) 685-9301

VEHICLE ABATEMENT INFORMATION

Public

-Sheriff's Office 313-2796

Private

- Department of Conservation and Development
Building Inspection 646-4108

VENDORS, Outside

Public Works

- Purchasing 313-7300

VERIFICATION OF EMPLOYMENT FOR PUBLIC WORKS

Public Works

- Administration HR, Secretary 313-2340

VETERANS SERVICE OFFICE

150 Muir Road, Martinez 372-2000

V

VIEW OBSTRUCTION

Public Works (Bushes, tree branches on county roads)

-Maintenance 313-7000

-Traffic, Greg Stelzner 313-2258

Department of Conservation and Development (Private Property)

-Community Development 674-7200

VOICE MAIL PROBLEMS

Department of Conservation and Development

- Building Inspection, DOIT 313-1250

- Community Development, DOIT 313-1250

Public Works

- Information Technology 313-2347

VOTER REGISTRATION

335-7800

W

WAIVING FEES (AOB-TRAFFIC/ROAD)	
Public Works	
- Transportation	313-2276
WALLS, Retaining	
- In road right of way	
APC, Bob Hendry	674-7744
- Otherwise	
Department of Conservation and Development	
Building Inspection	646-4108 or 674-7200
WASP NESTS	
Vector Control	685-9301
WASTE MANAGEMENT, Solid	
Department of Conservation and Development	
- Community Development	674-7203
WASTER WATER TREATMENT PLANTS	
(See Sanitary Districts)	*****
WATER, Coming From Under House	
Department of Conservation and Development	
- Building Inspection	646-4108
WATER COMMITTEE, from Board of Supervisors	
- Contra Costa Water Agency	*****
WATER CONNECTION FEES	
- Appropriate Water District (See page 28)	*****
WATER DISTRICTS (See page 28)	*****
WATER DRAINAGE	
- Public Works Flood Control County staff	313-2000

W

WATER FLOW IN STREAMS

Public Works

- Flood Control, Mark Boucher 313-2274
- Flood Control Counter staff 313-2000

WATER LEAKS

- Local Water District (See page 28) *****

WATER LINE INFORMATION

- Meter to Street, Water District in area (See page 24) *****

WATER SPRINKLERS

- Contra Costa County Only

Public Works

- Maintenance 313-7000
- Facilities Maintenance (County Buildings) 313-7052

WATERSHED ATLAS

Department of Conservation and Development

- Community Development
Abby Fateman 674-7820

WATERSHED PROGRAM (County)

Public Works

- Flood Control 313-2296

WASTE WATER TREATMENT

- Sanitary District (See page 19 to 23) *****

WBE/MBE

- See MBE/WBE *****

WEATHER INFORMATION

- Quality Forecast 1-800-435-7247
- Road 1-800-427-7623

WEATHERIZATION PROGRAM

- Department of Conservation and Development 335-2100

W

WEB SITE, County

- www.co.contra-costa.ca.us

WEBSITE PROBLEMS

Public Works

- Michele Wara 313-2202

WEED ABATEMENT

- Private property- Fire District in area (See page 11) *****
- County property, Public Works Maintenance 313-7000
- Southern Pacific Right of Way,
- Public Works Real Estate 313-2220

WEED CONTROL

- Along Roads, Public Works Maintenance 313-7000
- Along Railroad Property
(Railroad Vegetation Sup) (209) 460-6340

WEIGHTS & MEASURES (See Agriculture, Department of)

WEIGHT RESTRICTIONS ON BRIDGES

- Application and Permit Center, Bob Hendry 674-7744

WELLS (Water/Gas)

- Environmental Health (Water) 692-2500
- Community Development (Gas) 674-7200

WHITE BAGS (with County labeling)

Public Works

- Maintenance 313-7000

WIDE LOAD PERMIT (Transportation Permit)

Application and Permit Center

- Bob Hendry 674-7744

W

WIDENING A ROAD

Public Works

- Transportation Engineering, Chris Lau

313-2293

- Work in progress, Construction

313-2320

WINDMILLS

Department of Conservation and Development

- Community Development

674-7200

WIND SPEED

- See "Weather Information"

WINDOWS (AUTO)

- Damaged by County Vehicle - Claims

335-1450

WOOD CHIPS (TO GIVE AWAY)

Public Works

- Maintenance

313.7000

WORK ALTERNATIVE PROGRAM

- Sheriff Department,

815 Court Street, Martinez

646-4670

WORKERS COMPENSATION FORMS

Public Works

- Administration HR

313-2107

Risk Management

335-1400

Department of Conservation and Development

Y

YELLOW JACKETS
- Vector Control

685-9301

Z

ZONE

Application and Permit Center

- Flood

674-7200

- Special Studies

674-7200

ZONING

Department of Conservation and Development

- Community Development

674-7200

- Violations, Building Inspection

674-7210

ZONING ADMINISTRATOR'S MEETING AGENDA

Department of Conservation and Development

- Community Development

674-7200

ZONING VIOLATIONS

Department of Conservation and Development

- Building Inspection, Code Enforcement

674-7210

Iz

Revised April 10, 2018

G:\Admin\Izimm\Phones\ICG 2018 4-10-18.docx