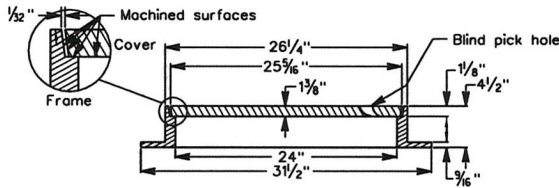
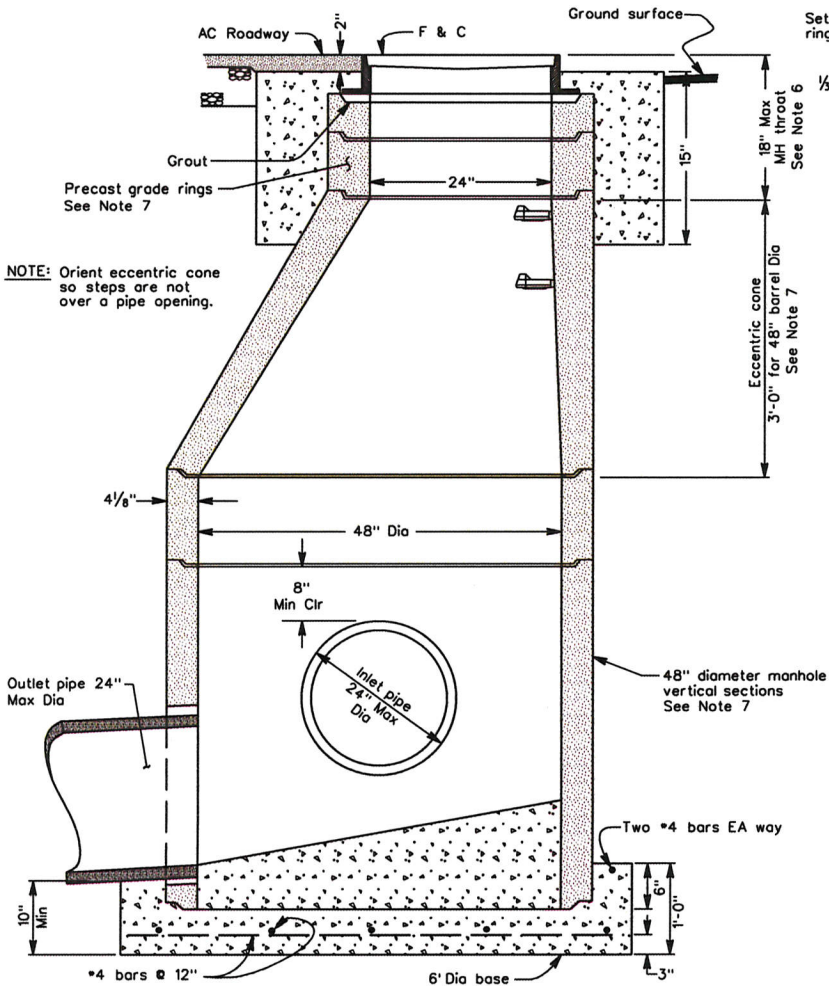
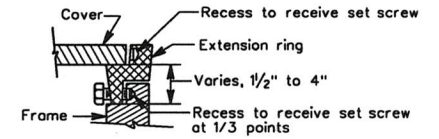


Julia R. Bueren
 PUBLIC WORKS DIRECTOR
 March 11, 2014
 PLANS APPROVAL DATE
 The County of Contra Costa or its officers or agents shall not be responsible for the accuracy or completeness of electronic copies of this plan sheet.

REGISTERED PROFESSIONAL ENGINEER
 JULIA R. BUEREN
 No. 37937
 CIVIL
 STATE OF CALIFORNIA



TYPICAL FRAME AND COVER DETAIL



TYPICAL CAST IRON EXTENSION RING
 See Note 7

NOTES:

1. For General Manhole Notes and Details, see Standard Plan CD35.
2. All concrete joints shall be cleaned wetted, and mortared prior to setting next section. Joints shall then be patched, troweled, and brushed smooth.
3. Frame and extension rings must be secured by concrete block, unless approved otherwise by the Public Works Department.
4. Manhole cover frame shall be adjusted to conform to grade and cross slope of pavement.
5. Manhole frame and cover shall be Phoenix Iron (Oakland) Model P-1090 or South Bay Foundry No. 1900 CPH or approved equivalent.
6. Use of precast grade rings are limited by 18" maximum manhole throat length. Cast iron extension rings are allowed for conforms to pavement overlays only.
7. The precast components shall conform to the Central Precast (U.S. Concrete Precast Group, Northern California) Drawing Nos. 20-48C, 20-48V and 20-48 EC, or equivalent.

41

PRECAST MANHOLE WITH TYPE I BASE

NO.	DATE	REVISION	DESCRIPTION	BY

COUNTY OF CONTRA COSTA
 PUBLIC WORKS DEPARTMENT
 MARTINEZ, CALIFORNIA
 STANDARD PLAN

**PRECAST MANHOLE,
 TYPE I BASE,
 FRAME & COVER**

SCALE: NO SCALE DATE: 3/14
 DRAWN BY: H. HUSSEY PLAN NO. CD30
 CHECKED BY: M. HOLLINGSWORTH

STD. PLAN CD30