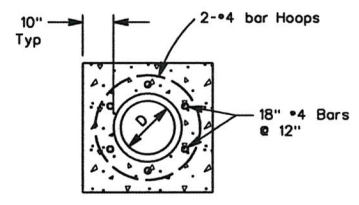


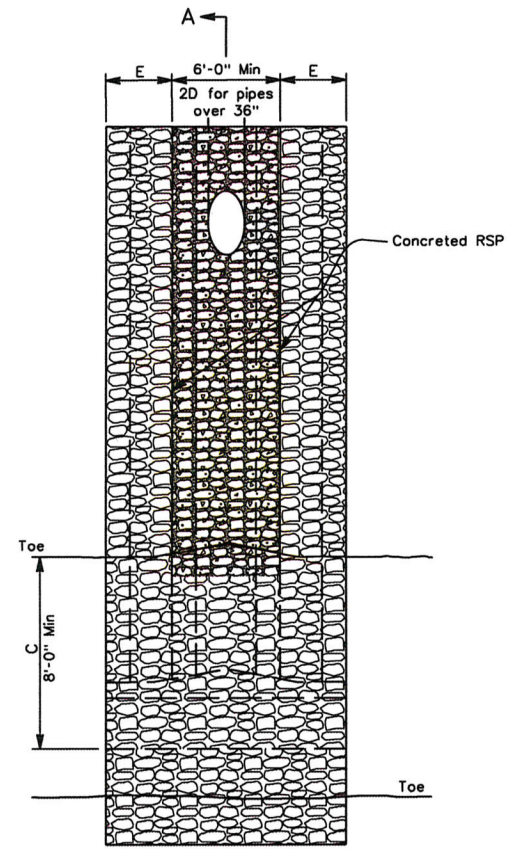
Julia R. Bueren
 PUBLIC WORKS DIRECTOR
 March 11, 2014
 PLANS APPROVAL DATE

REGISTERED PROFESSIONAL ENGINEER
 JULIA R. BUEREN
 No. 37937
 CIVIL
 STATE OF CALIFORNIA

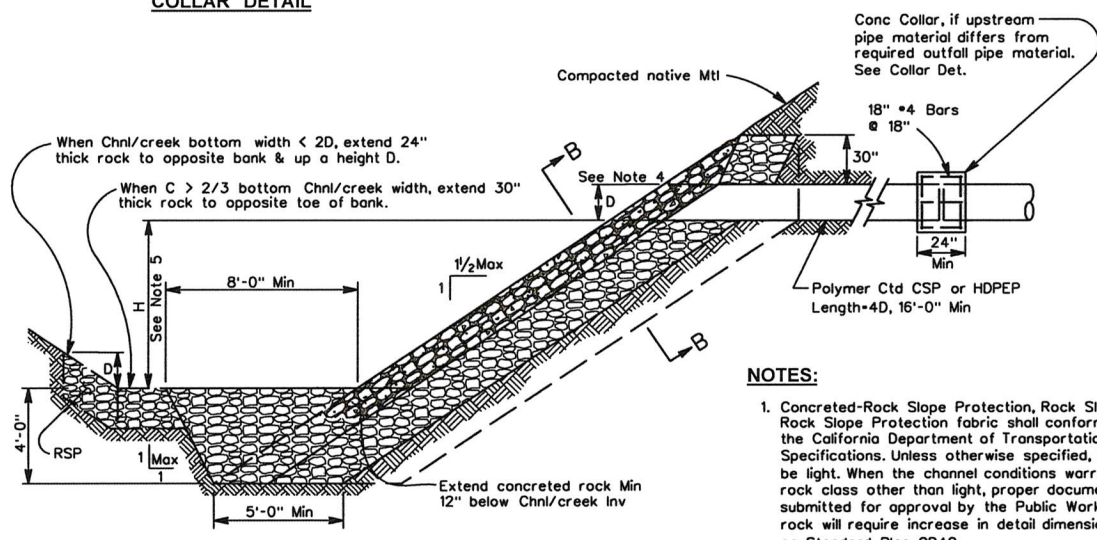
The County of Contra Costa or its officers or agents shall not be responsible for the accuracy or completeness of electronic copies of this plan sheet.



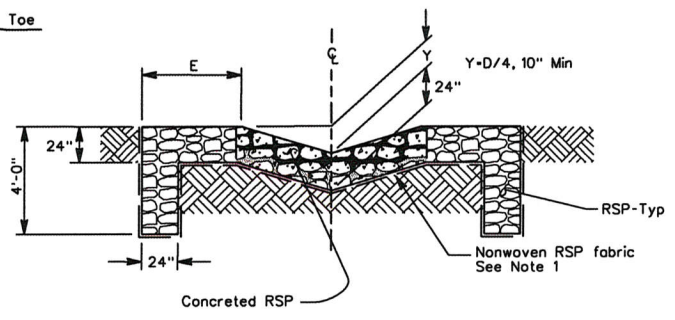
COLLAR DETAIL



PLAN



SECTION A-A



SECTION B-B

NOTES:

1. Concreted-Rock Slope Protection, Rock Slope Protection and Rock Slope Protection fabric shall conform to Section 72 of the California Department of Transportation's Standard Specifications. Unless otherwise specified, the rock class shall be light. When the channel conditions warrant the use of any rock class other than light, proper documentation must be submitted for approval by the Public Works Department. Larger rock will require increase in detail dimensions as per "Rock Table" on Standard Plan CD40.
2. Lap rock slope protection fabric in accordance with the manufacturer's requirements.
3. Concrete shall be placed in accordance with County Standard Provisions or project Special Provisions.
4. Minimum pipe diameter "D" shall be 18", unless otherwise approved by the Public Works Department.
5. Dimension "H" shall be a minimum of 24", unless otherwise approved by the Public Works Department.

H (ft)	E (ft)
2 to 7	2
7 to 14	4
Over 14	8

NO.	DATE	REVISION DESCRIPTION	BY

COUNTY OF CONTRA COSTA
 PUBLIC WORKS DEPARTMENT
 MARTINEZ, CALIFORNIA
 STANDARD PLAN

**ROCK SLOPE PROTECTION
 PIPE OUTFALL**

SCALE: NO SCALE
 DRAWN BY: L. COSTA
 CHECKED BY: M. HOLLINGSWORTH

DATE: 3/14
 PLAN NO. **CD50**