



Upper Sand Creek Basin Surplus Soil

Quick Facts:

- 600,000 cy soil stockpiled and available for borrow at Upper Sand Creek Basin
- Upper Sand Creek Basin located 0.3 miles east of Deer Valley Road and 1.4 miles due west of new SR4 Sand Creek Road interchange. Site is just south of the Antioch Kaiser Hospital.

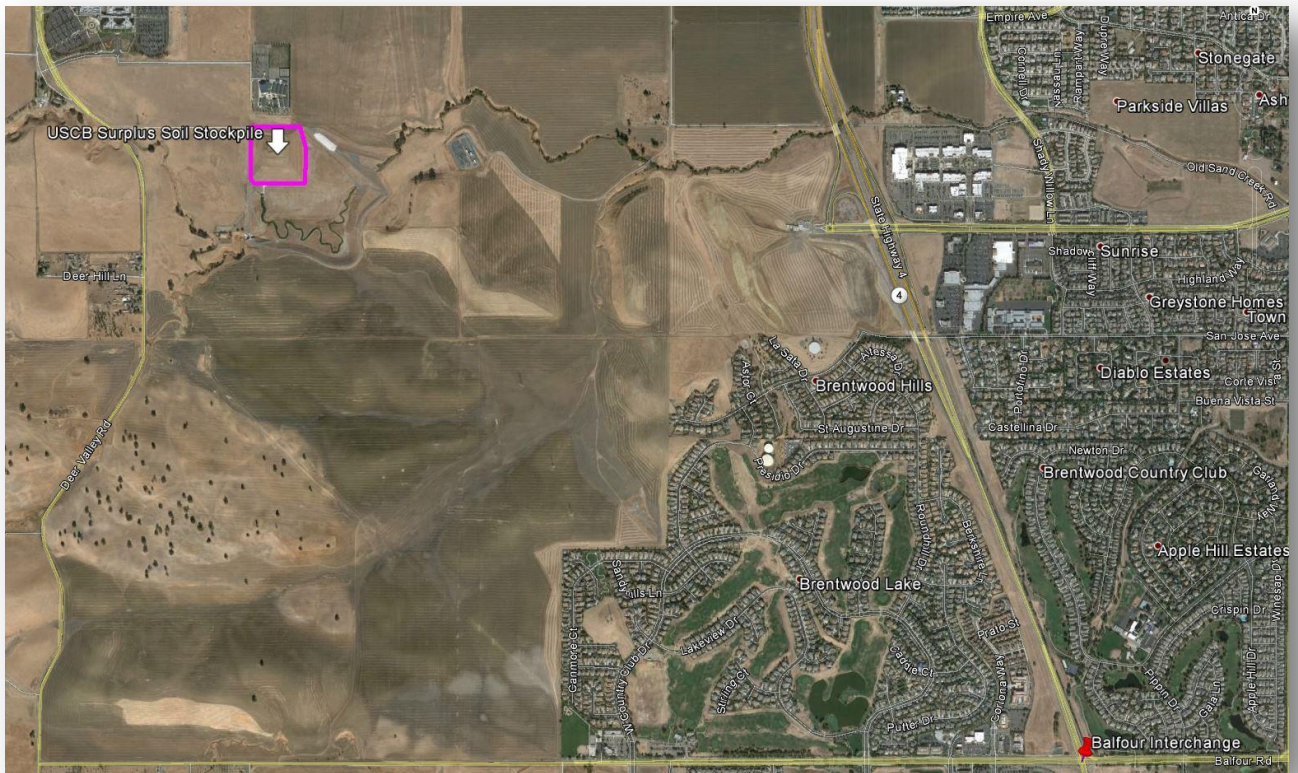


- Publicly owned site has been used for borrow since 1998.
- Past borrow operations brought this material to various delta islands, east county developments, and built the pad for the Antioch Kaiser Hospital.
- Past haul routes were Deer Valley to Lone Tree to SR4 Bypass or Deer Valley to Balfour to SR4 Bypass.
- Current grading plan designed for easy access and efficient loading.
- Material is generally lean clay to sandy lean clay. PIs generally range from 25 to 32.
- Full geotechnical report with test pits and boring logs available.
- Fully covered by East Contra Costa Habitat Conservation Plan. PSR complete and fees paid.
- CEQA coverage complete. Comprehensive SWPPP for stockpile complete and approved.
- Soil characterization analyticals available.
- Summary of encroachment permit terms: District to provide staking, payment of HCP fees and prepare SWPPP. Contractor to implement BMPs, follow provided grading plan and perform as built survey. For complete terms, please see draft permit on district's website.
- Flood Control District cannot warrant suitability of material for contractor's purpose.
- For full details or more information, please visit the Flood Control District website:

<http://www.contracosta.ca.gov/5738/Available-Soil>

or contact Paul Detjens at pdetj@pw.cccounty.us or (925) 313-2394

USCB is located off of Deer Valley Road between Antioch and Brentwood



Past Borrow Operation

