



# CLIMATE RESILIENCE IN CONTRA COSTA COUNTY

Ellie Householder, Althea Lyness-Fernandez, Mimi Kaplan



## TODAY'S AGENDA

- Introduction
- Overview of ART
- GSPP Project
- Next Steps & Questions
- Discussion

- i. What areas are likely to flood?
- ii. What is at risk?
- iii. What are the consequences of flooding?
- iv. What is an effective response?

***HOW DO WE DO THIS?***



***FRAMING***



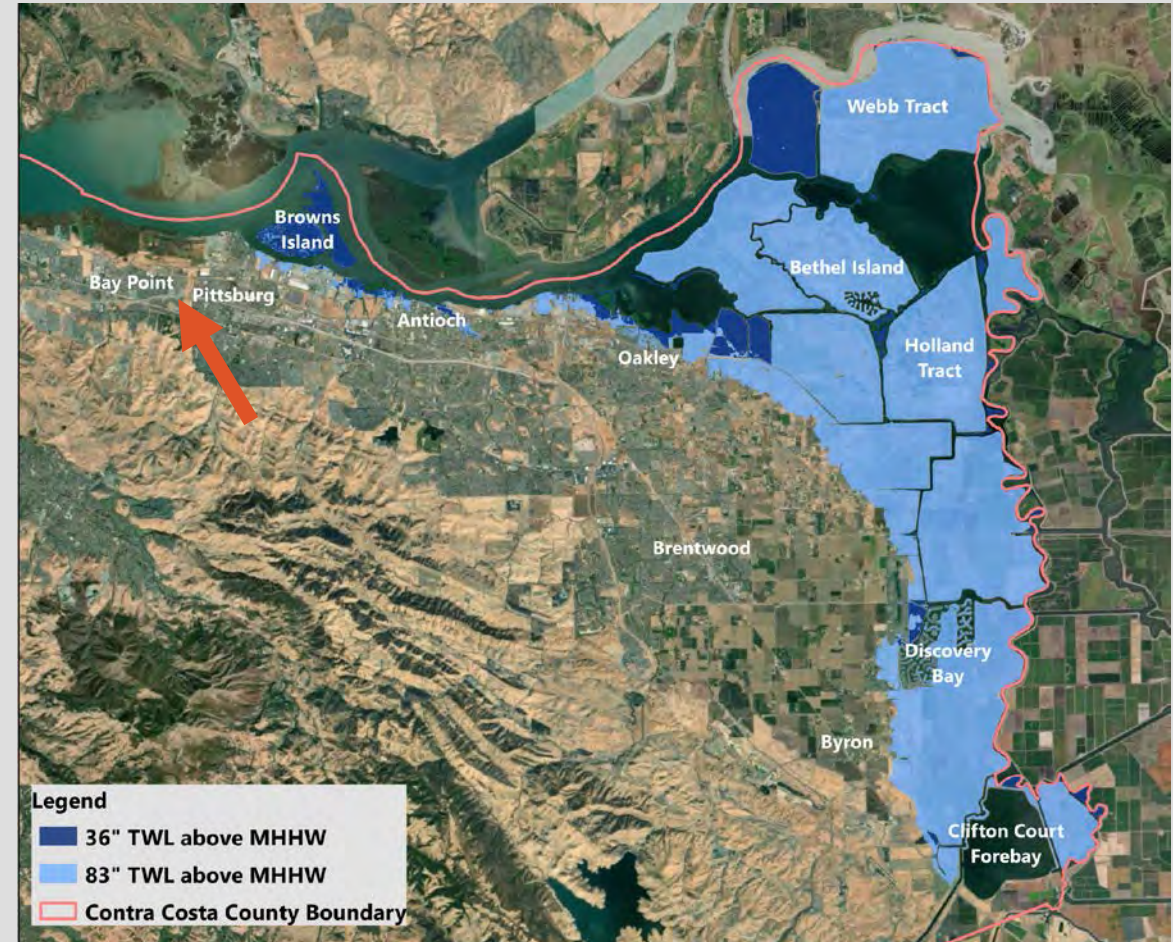
## AN OVERVIEW OF THE ART STUDY



# ART CONTRA COSTA COUNTY: CONNECTING WEST & EAST COUNTY



*West County*

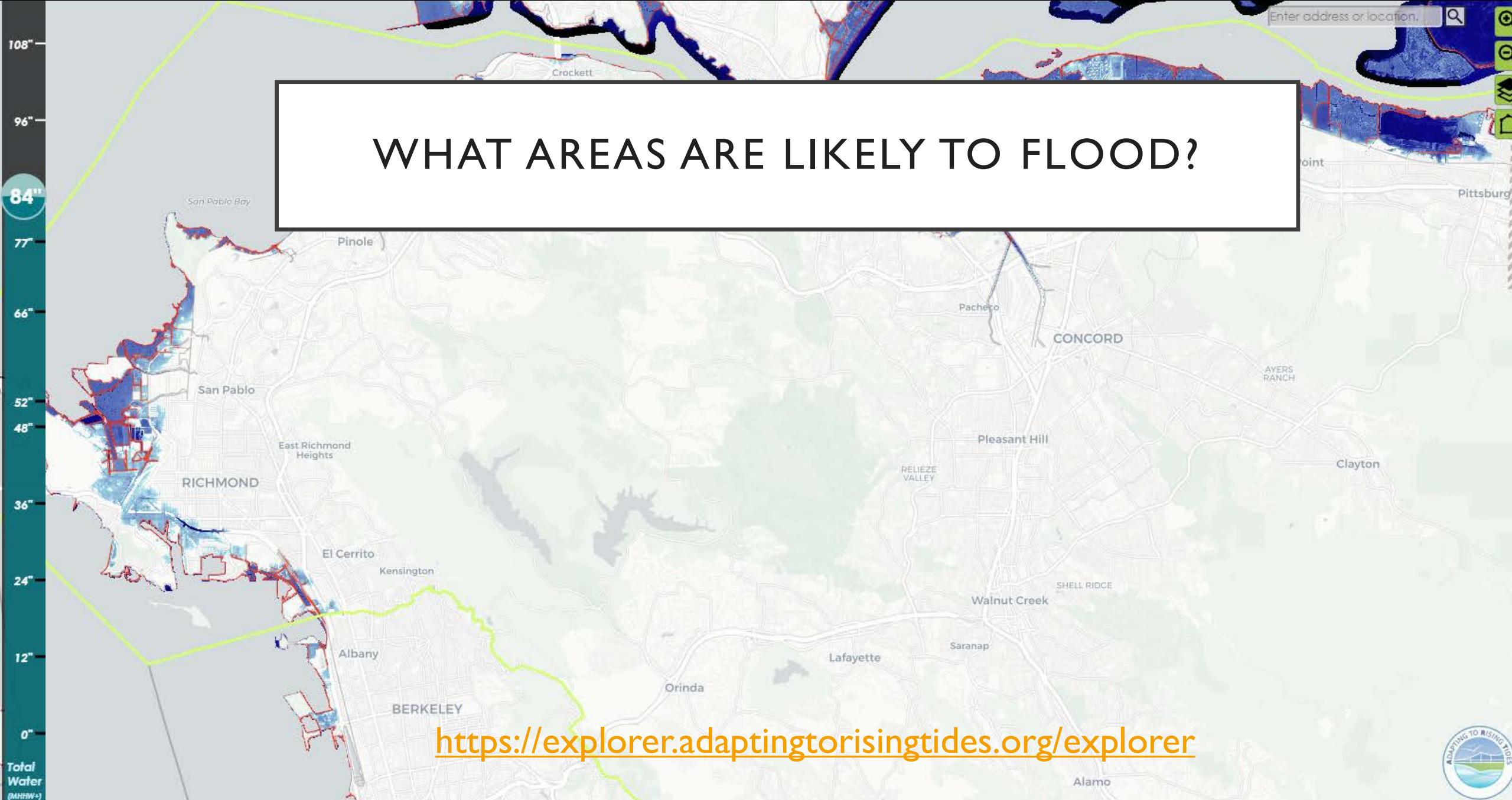


*East County*



Enter address or location.

# WHAT AREAS ARE LIKELY TO FLOOD?



<https://explorer.adaptingtorisingtides.org/explorer>





# WHAT'S AT RISK

SECTORS	TYPES OF ASSETS	# AT-RISK ASSETS <sup>2</sup>
 <b>BUSINESS &amp; INDUSTRY</b>	Commercial	277
	Industrial land use	462
	Hazardous Material Sites	1,287
 <b>CONTAMINATED LANDS</b>	Landfills	188-acres
	Brownfields	62
 <b>ENERGY</b>	Refineries	4
	Pipelines	55
	Power Generation	1
	Power Distribution Stations	11
 <b>TRANSPORTATION</b>	Freight and Passenger Rail	14 miles
	Roadways	27.5 miles
 <b>HOUSING</b>	Single	507
	Multi-family	607
	Mobile homes	2
 <b>PARKS &amp; RECREATION</b>	Regional Parks	7
	City Parks	7
	Mannas	8
 <b>PUBLIC SERVICES</b>	K-12 Schools	46
	Public Healthcare Facilities	13
	Emergency Facilities	28
 <b>SEAPORT TERMINALS</b>	Port of Richmond	Limiting access from seaport
	Marine Oil Terminals	Tidal, wind & wave erosion
 <b>WATER MANAGEMENT</b>	Water Supply	477,212 residents
	Waste Water Services	8
	Storm Water Systems	86% of system

WHAT ARE THE  
CONSEQUENCES OF  
FLOODING?



**Economic**



**Residential**



**Infrastructure and  
Services**



**Environment and  
Recreation**



# WHAT IS AN EFFECTIVE RESPONSE?



Public Services



Transportation



People



Contaminated  
Lands



Water Mgmt



& more!



**HOW DO WE DO THIS?**



# CHALLENGES

WE NEED.....

Information  
Sharing

Governance

Physical  
Infrastructure

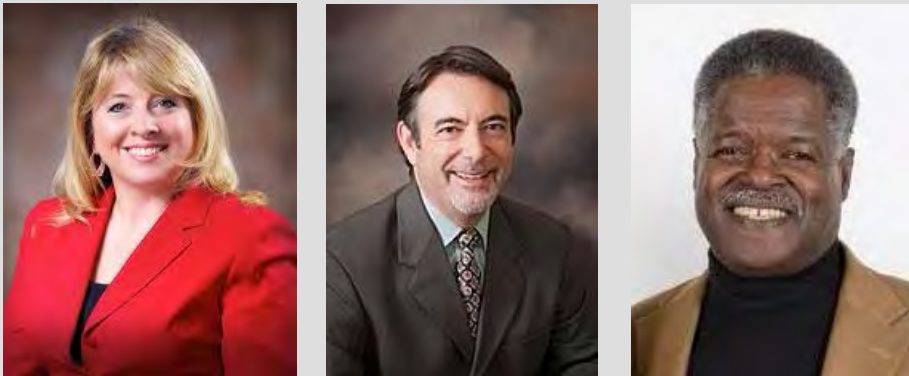
Function

*HOW DO WE DO THIS?*



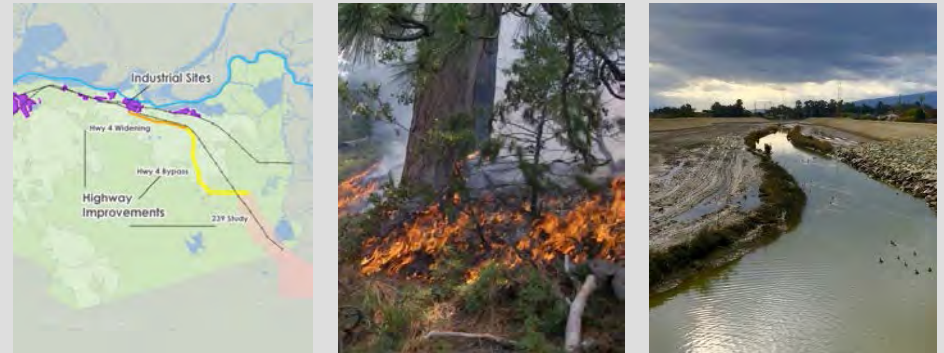
# INTERVIEWS & CASE STUDIES

## Stakeholder Interviews



County Supervisors  
Office of Sustainability  
Bay Conservation & Development Commission

## Case Studies



Regional  
Climate-focused  
Governance structures

# 3 GOVERNANCE STRUCTURES

## Working Group

## Memorandum of Understanding

## Joint Powers Authority

ESTABLISHMENT & MAINTENANCE?



LEVERAGE FUNDING?



LARGE SCALE INITIATIVES?





**OUR RECOMMENDATION:  
WORKING GROUP**

QUESTIONS?





## DISCUSSION QUESTIONS

- Which of the “large projects and initiatives” seems the most feasible? Who needs to be at the table to make it happen? Are there other projects or initiatives we should focus on?
- What additional information or support do you need to start working on projects related to rising tides?
- How can your team incorporate the ART findings into existing job, responsibilities, and activities?
- What project does your team have that would benefit from a Goldman School team?



To learn how your team can work with a UC Berkeley,  
Goldman School of Public Policy, contact  
**Althea Lyness-Fernandez**  
**([althealyness@berkeley.edu](mailto:althealyness@berkeley.edu))**

For more information on initiatives related to  
sustainability and climate adaption, contact:  
**Jody London**  
**([jody.London@dcd.Cccounty.Us](mailto:jody.London@dcd.Cccounty.Us))**